



NAFPLIA PALACE
Hotel & Villas

*where ancient history
embraces modern luxury*

Nafplia Palace Hotel & Villas overview

A symbol of grandeur nestled in a natural masterpiece; Nafplia Palace Hotel & Villas complements history with refined luxury overlooking the mesmerizing Aegean sea. A world renowned hotel, located next to a plethora of World Heritage sites. You will feel the pulse of history from this contemporary 21st century villa which meticulously rests within the walls of the 3rd Century BC Akronafplia fortress.

With a new collection of achingly beautiful rooms, villas and bungalows (84 in total), once again Nafplia Palace can lay claim to being a legendary hotel and the jewel of Peloponnese. Nafplia Palace is a member of Small Luxury Hotels of the World.

feel the *pulse*
of history



Accommodation at Nafplia Palace

Nafplia Palace Hotel & Villas comprises of the main hotel building with 30 rooms, 18 luxury rooms and 3 family suites all with sea views. The hotel building also includes three restaurants, bar, spa & beauty centre, conference and function rooms.

Adjacent to the main hotel building is the Villas Area with 33 individually designed villas all of which have commanding sea views and have use of a shared pool or private outdoor Jacuzzi or private heated pool.



Nafplia Palace villa area

The 33 individually designed Villas range in size and layout but all feature stunning sea views.

Click on a Villa type below to view the layout;

[deluxe bungalows](#)

[deluxe bungalows with shared pool](#)

[luxury bungalows](#)

[premier villas](#)

[deluxe bungalow with private heated pool](#)

[luxury bungalow with private outdoor Jacuzzi](#)

[luxury villa with private outdoor Jacuzzi](#)

[family villas](#)

[luxury bungalows with private heated pool](#)

[premier villas with private heated pool](#)

[ambassador spa villa](#)

[grand villa \(2 bedrooms\)](#)

[grand family villa \(3 bedrooms\)](#)

[island villa with private heated pool](#)

[ambassador villas with private heated pool](#)

[palace villa with private heated pool](#)



Deluxe Bungalow with sea view

The king bedded Deluxe Bungalows (approx. 27-30 sq.m.) offer wonderful outdoor views and feature a bedroom, sitting area with writing desk and Jacuzzi or Aerospa bathtub in the marble-clad bathroom, some with separate walk-in shower and separate W.C. All with control panel for regulation of all electronic devices. The Bungalows feature air-conditioning/heating, LCD Sat-TV with 44 channels, WiFi internet access with charge, mini bar, safe, hairdryer, slippers, Bulgari toiletries and Frette linen.

Maximum Occupancy: 3 persons



[View plan of Deluxe Bungalow](#)



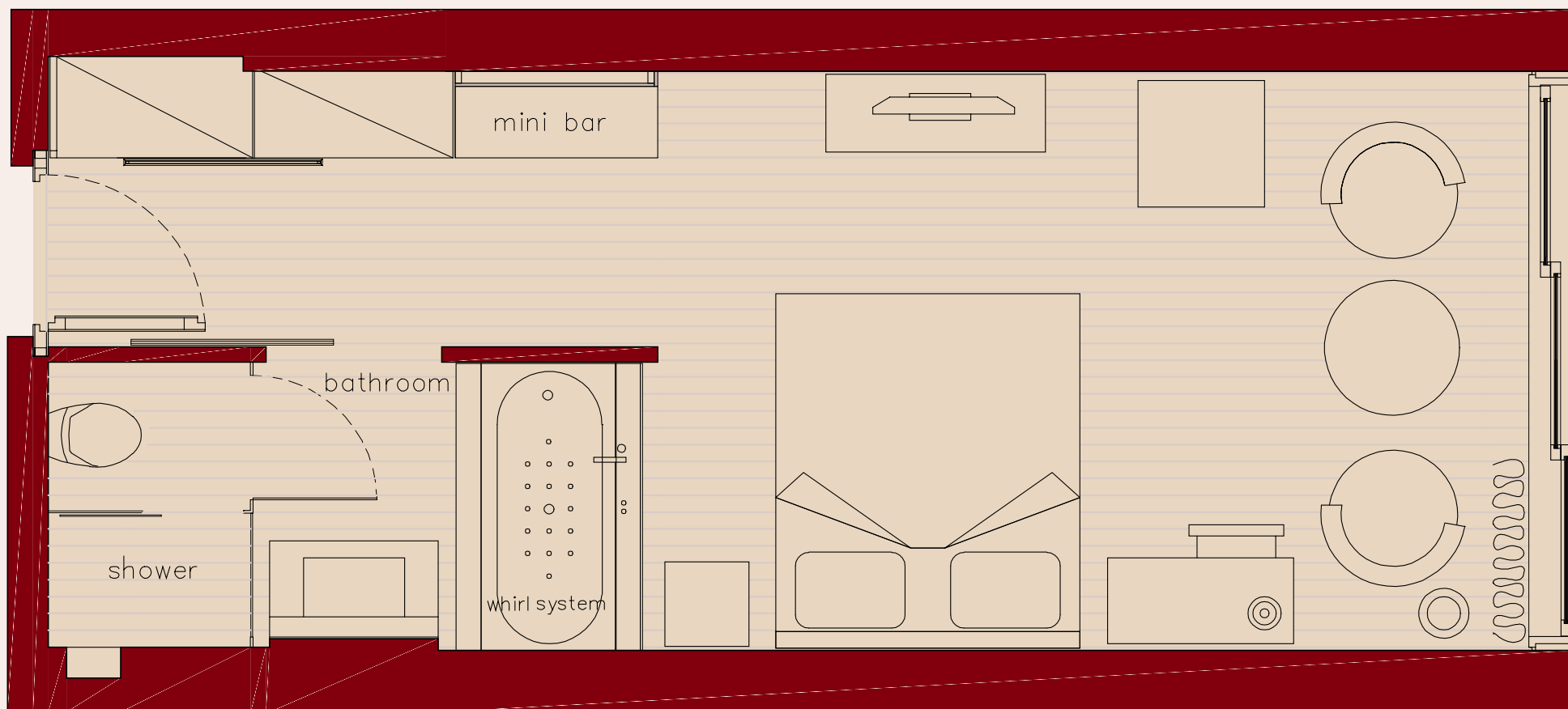
NAFPLIA PALACE

Hotel & Villas

Deluxe Bungalow with sea view

Room 25m²

Capacity 2 pax





NAFPLIA PALACE

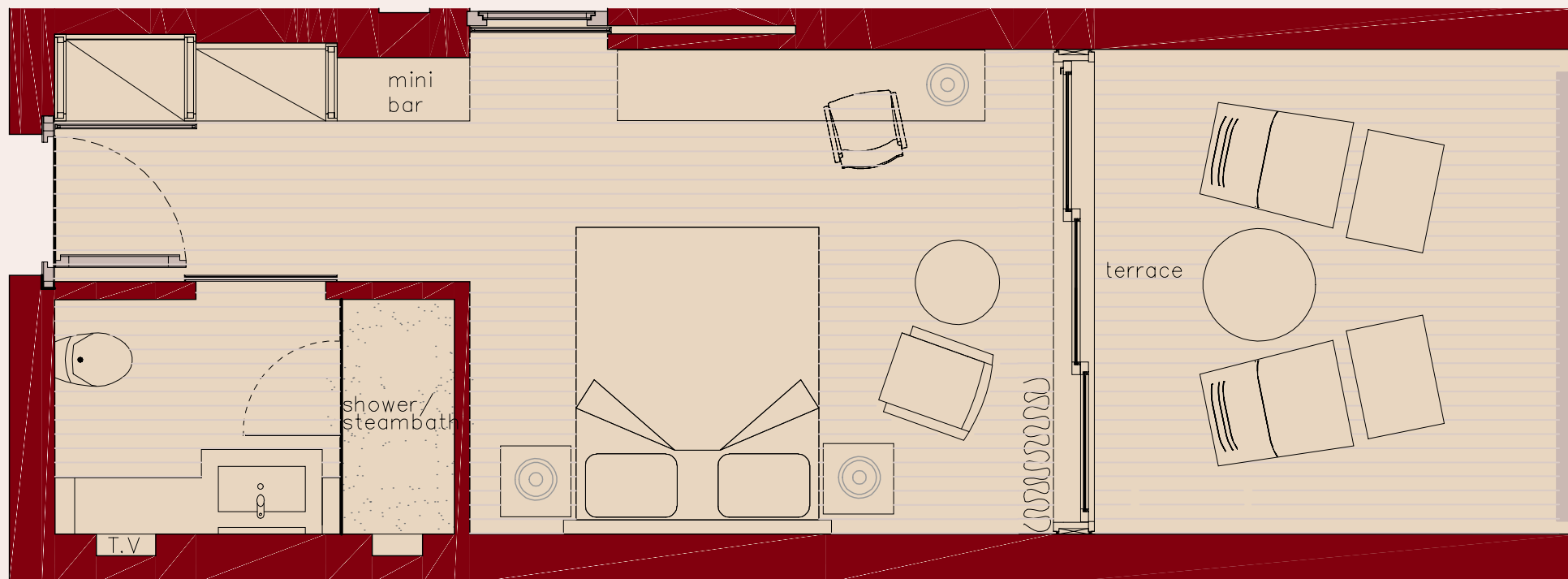
Hotel & Villas

Deluxe Bungalow with sea view

Room 21 m²

Terrace 10 m²

Capacity 2 pax





NAFPLIA PALACE

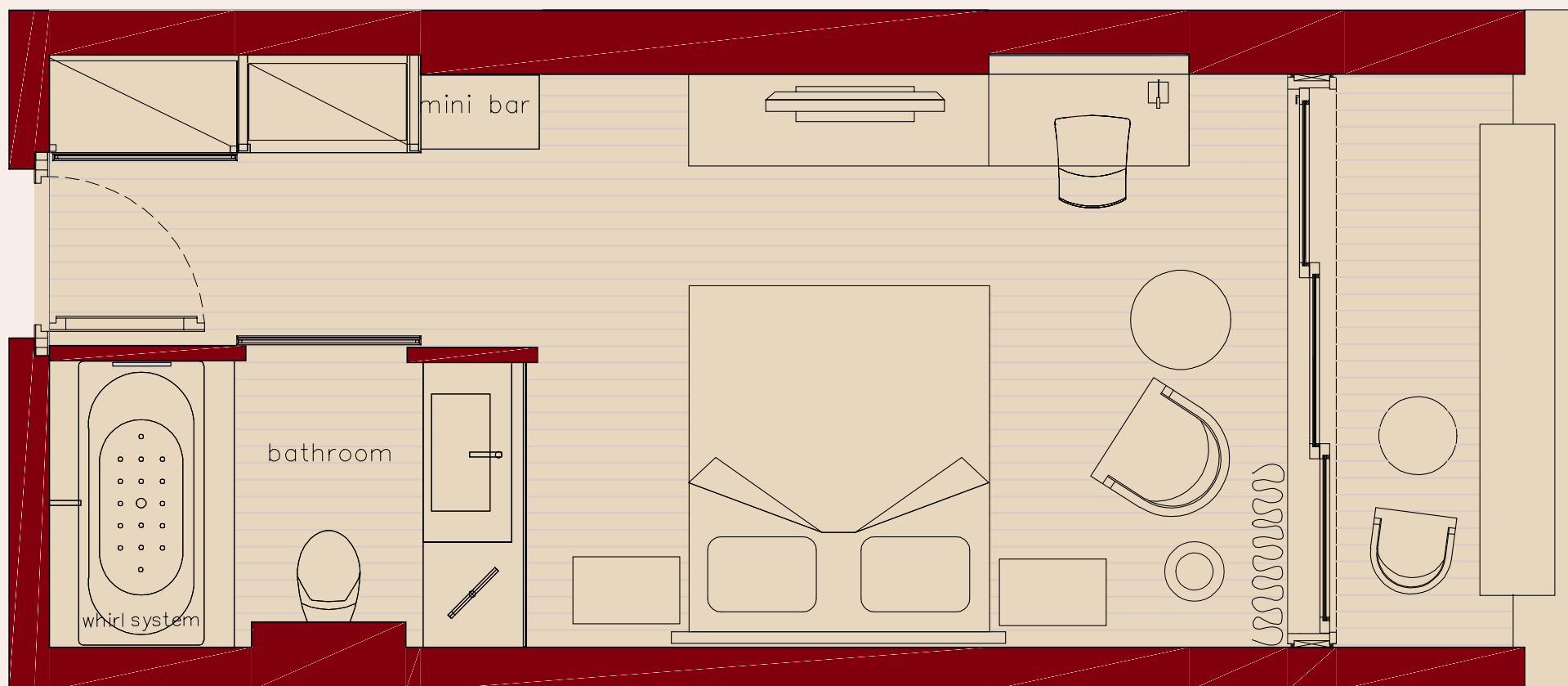
Hotel & Villas

Deluxe Bungalow with sea view

Room 27 m²

Terrace 4 m²

Capacity 2 pax



Deluxe Bungalow sea view with shared pool

The king bedded Deluxe Bungalows (26 sq.m.) offer wonderful outdoor views and feature a bedroom, sitting area with writing desk and Jacuzzi bathtub in the marble-clad bathroom and a shared heated pool (heating with charge). All with control panel for regulation of all electronic devices.

The Bungalows feature air-conditioning/heating, LCD Sat-TV with 44 channels, WiFi internet access with charge, mini bar, safe, hairdryer, slippers, Bulgari toiletries and Frette linen.

Maximum Occupancy: 2 adults & baby cot



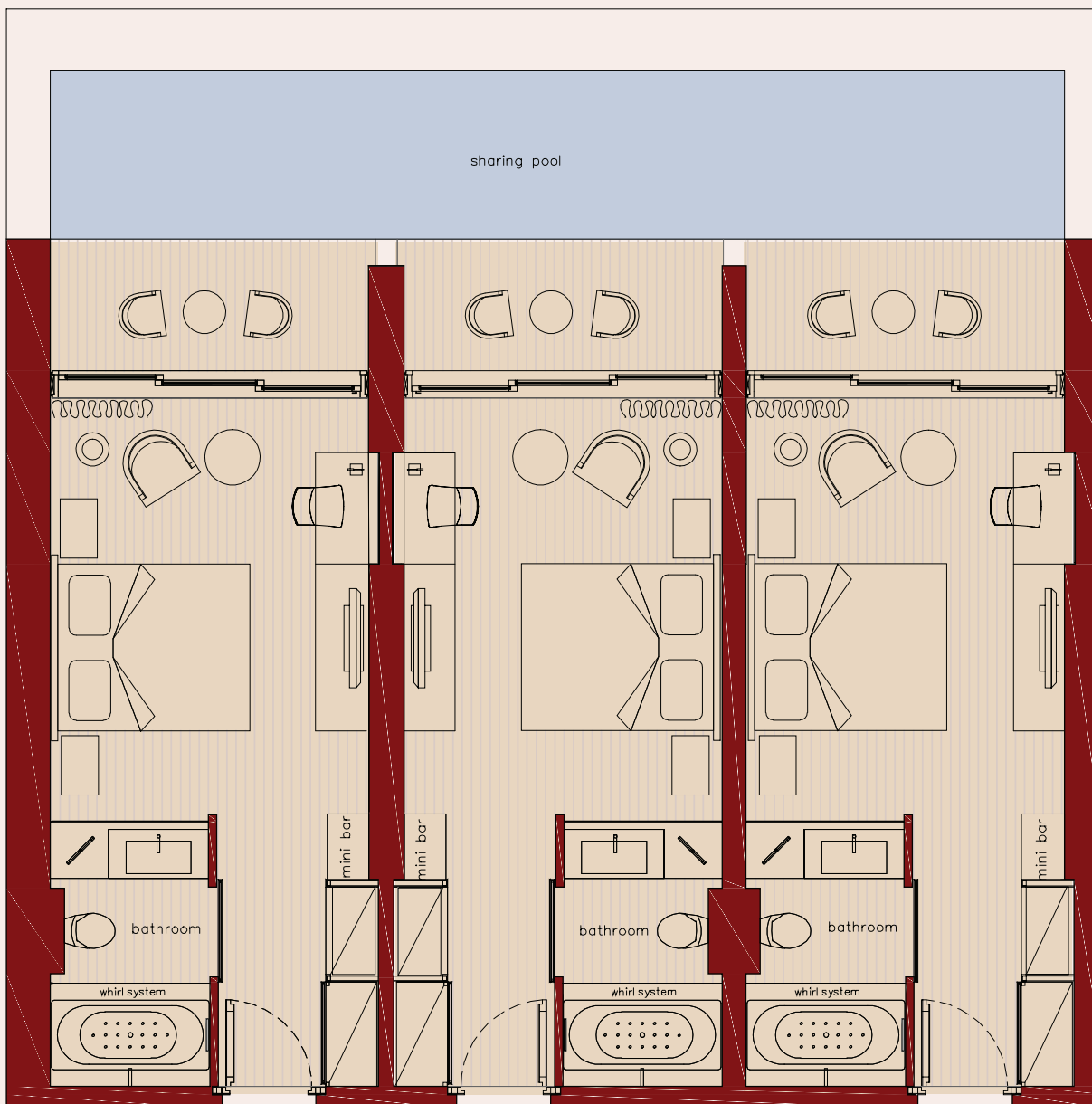
View plan of Deluxe Bungalow with shared pool



NAFPLIA PALACE

Hotel & Villas

Deluxe Bungalows sea view with shared pool



Room 26 m² each

Pool 11,0 x 1,7m

Luxury Bungalow with sea view

The Luxury Bungalows Sea View (30-35 sq.m) consist of one spacious bedroom, one marble-clad bathroom with Aerospa or Jacuzzi bathtub, separate walk-in shower, some with hydrojets and/or with separate WC. The state of art equipment includes in-bath TV and control panel for regulation of all electronic devices. All with private balcony or deck terrace offering panoramic views of the bay and the Venetian fortified island of Bourtzi. The bungalows feature air-conditioning/heating, LCD Sat-TV with 44 channels, clock radio or CD, WiFi internet access with charge, mini bar, safe, hairdryer, slippers, Bulgari toiletries and Frette linen.

Maximum Occupancy: 3 persons



View plan of Luxury Bungalow



NAFPLIA PALACE

Hotel & Villas

Luxury Bungalow with sea view



Room 35 m²

Terrace 11 m²

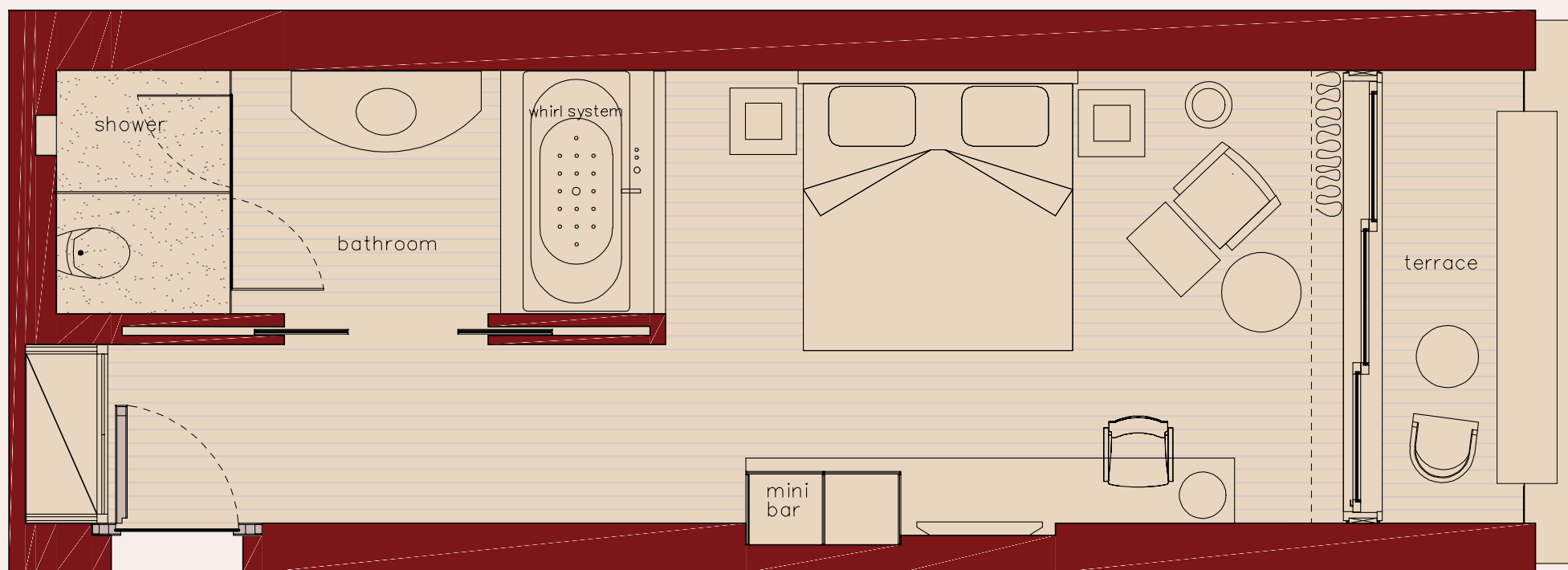
Capacity 2 pax



NAFPLIA PALACE

Hotel & Villas

Luxury Bungalow with sea view



Room 30 m²

Capacity 2 pax



NAFPLIA PALACE

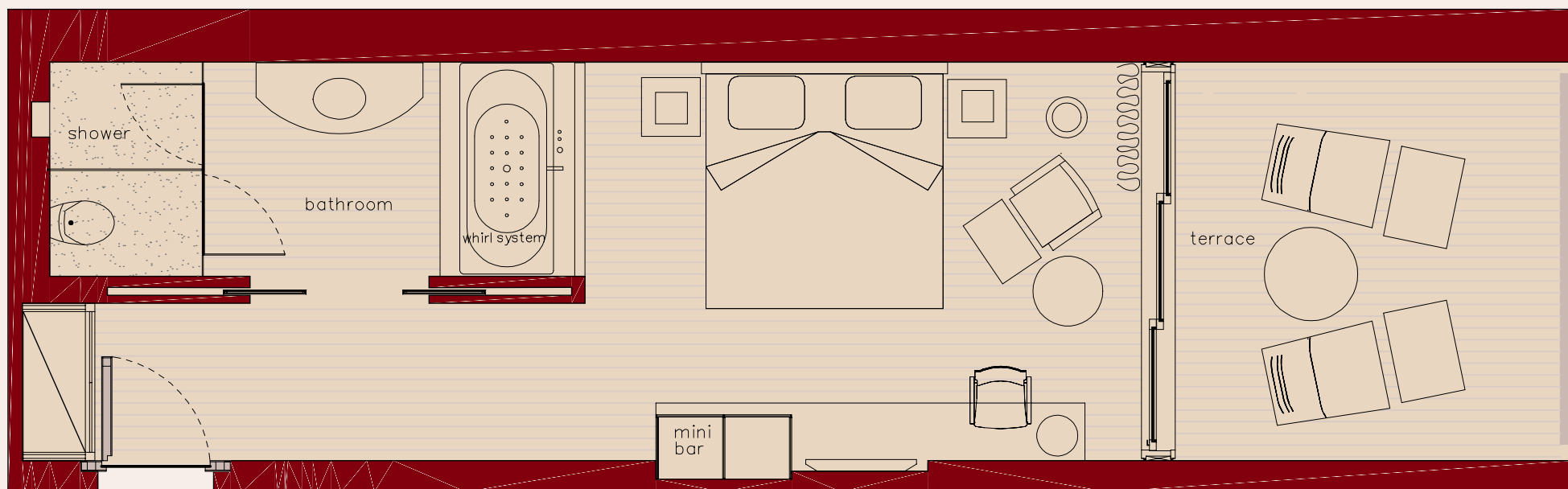
Hotel & Villas

Luxury Bungalow with sea view

Room 30 m²

Terrace 10 m²

Capacity 2 pax





NAFPLIA PALACE

Hotel & Villas

Luxury Bungalow with sea view



Room 32 m²

Capacity 2 pax

Premier Villa sea view

These spacious Villas (approx 50-65 sq.m.), offer panoramic view over the bay. They consist either of one king bedded bedroom and one living room or one king bedded bedroom with sitting area and a very spacious bathroom. All marble-clad bathrooms feature Jacuzzi or Aerospa bathtub and separate walk-in shower with hydrojets and steam bath.

Special features: Touch panel for regulation of all electronic devices, some with aquarium or fireplace and some with spacious deck terraces of approximately 37-55 sq. m. The Villas feature air-conditioning/heating, LCD Sat-TV with 44 channels, clock radio and CD, WiFi internet access with charge, mini bar, safe, hairdryer, slippers, Bulgari toiletries and Frette linen. Maximum Occupancy: 3 persons



View plan of Premier Villa



NAFPLIA PALACE

Hotel & Villas

Premier Villa sea view



Room	65 m ²
Terrace	55 m ²
Capacity	2-3 pax



NAFPLIA PALACE

Hotel & Villas

Premier Villa sea view



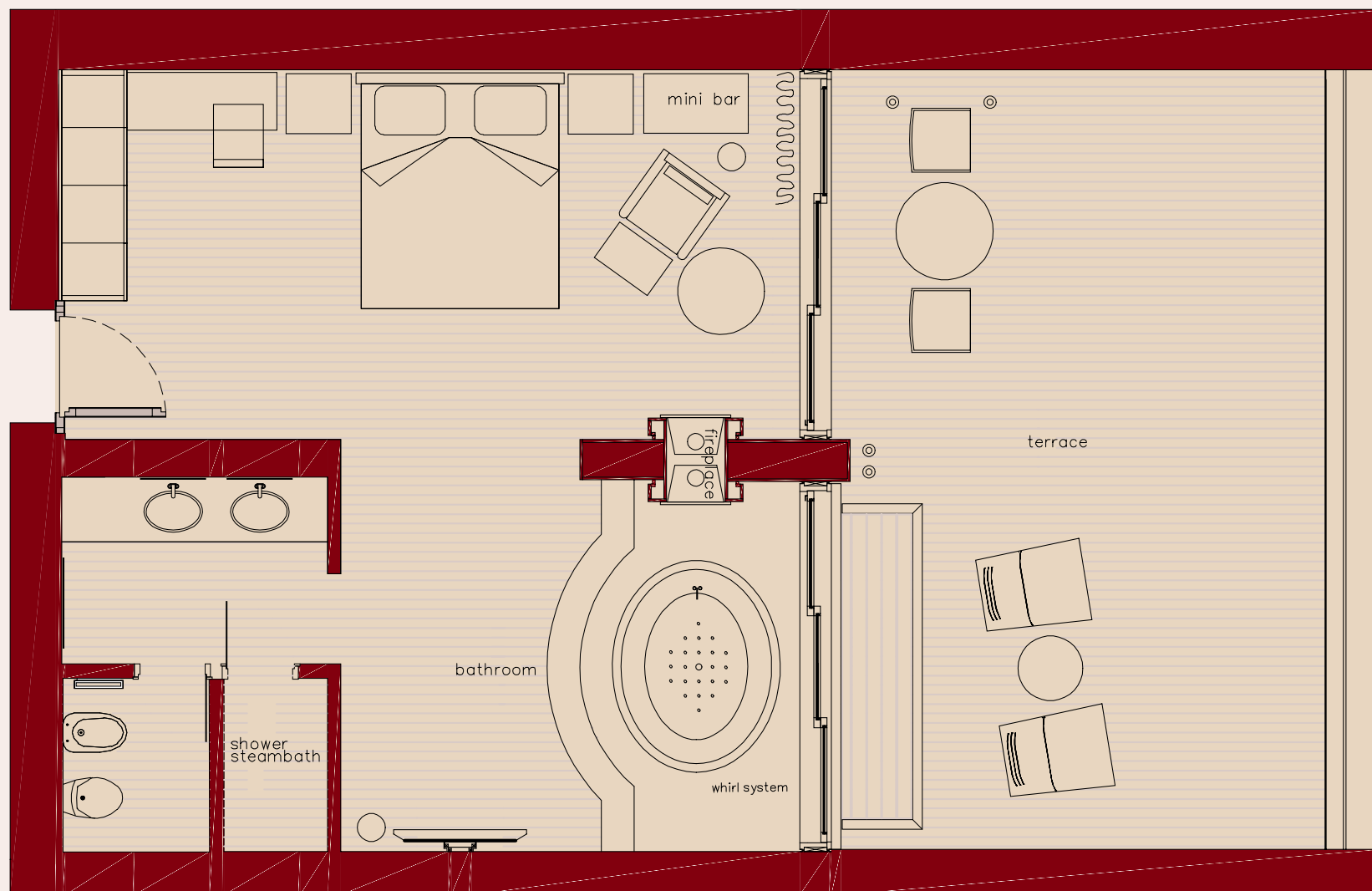
Room	50 m ²
Terrace	50 m ²
Capacity	2 - 3 pax



NAFPLIA PALACE

Hotel & Villas

Premier Villa sea view



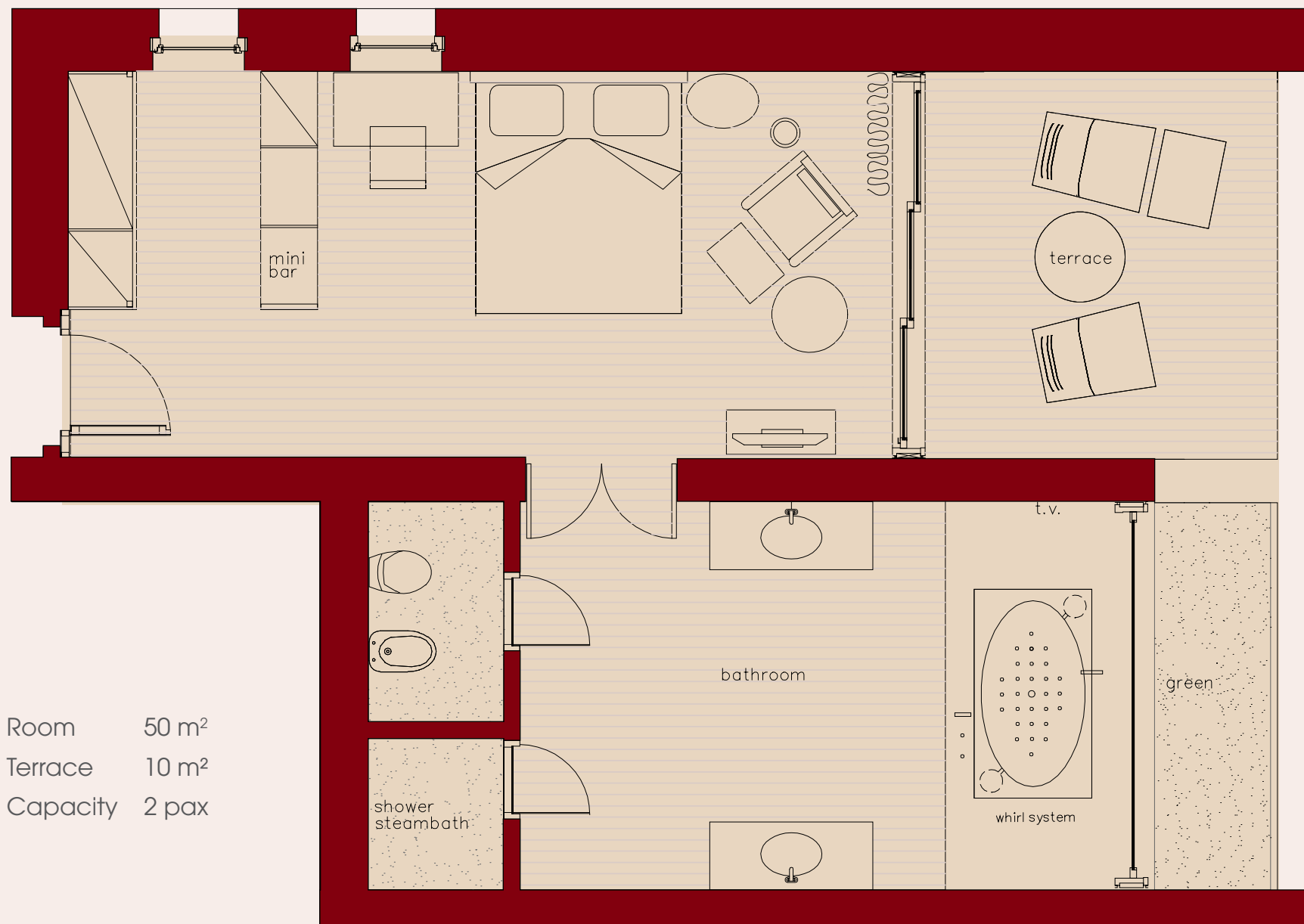
Room	50 m ²
Terrace	37 m ²
Capacity	2 pax



NAFLIA PALACE

Hotel & Villas

Premier Villa sea view

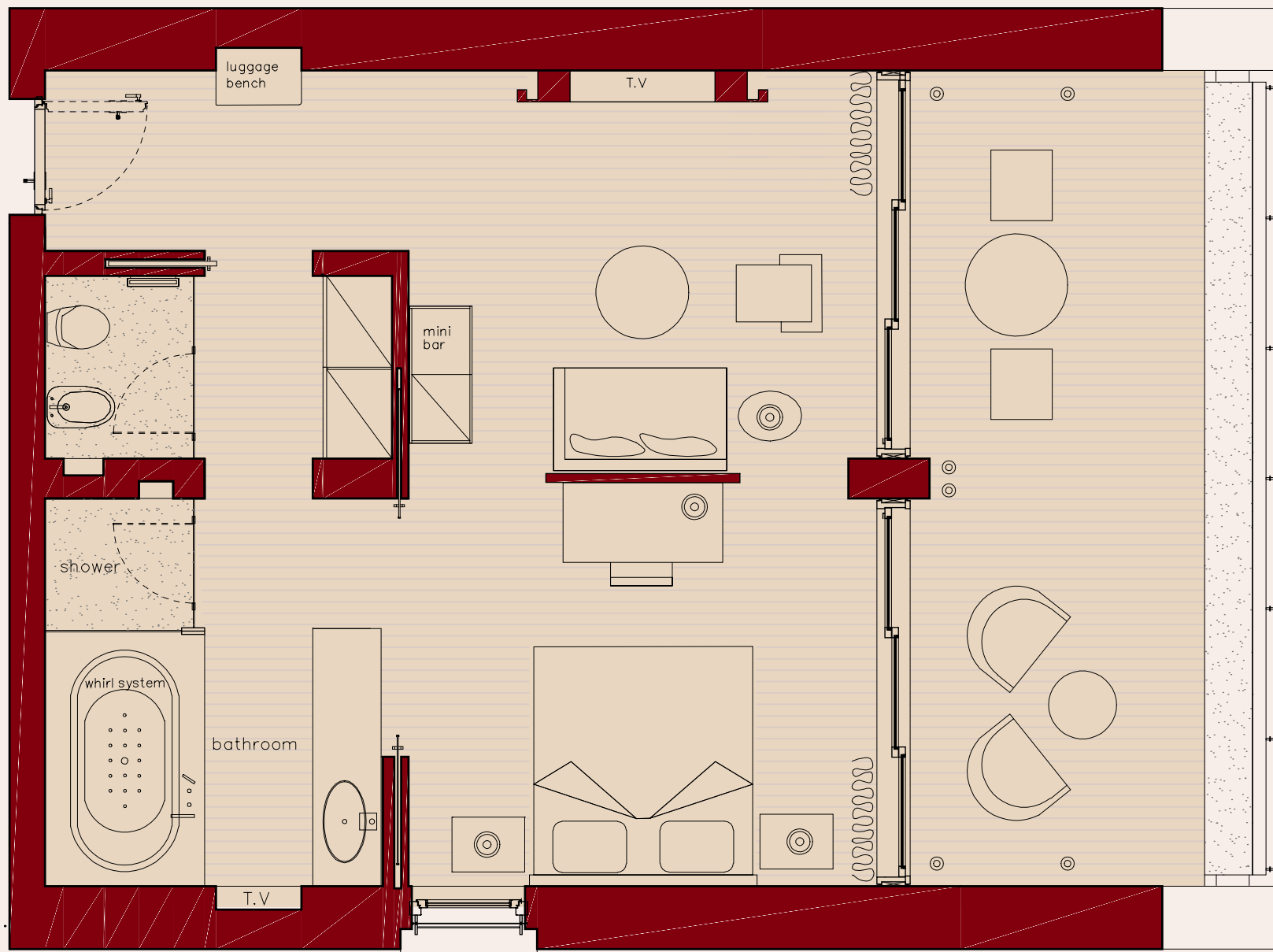




NAFPLIA PALACE

Hotel & Villas

Premier Villa sea view



Room	55 m ²
Terrace	22 m ²
Capacity	2 pax

Luxury Bungalow sea view with private outdoor Jacuzzi

The Luxury Bungalow Sea View (40sq.m.) features private deck terrace with outdoor heated Jacuzzi offering wonderful views, featuring a king bedded bedroom, sitting area with writing desk, Aerospa bathtub in the marble-clad bathroom, a separate walk-in shower with hydro jets and separate W.C.

Special features: In bath TV, touch panel for regulation of all electronic devices and private outdoor heated Jacuzzi (heating with charge). The Bungalow features air-conditioning/heating, LCD Sat-TV with 44 channels, WiFi internet access with charge, mini bar, safe, hairdryer, slippers, Bulgari toiletries and Frette linen.

Maximum Occupancy: 2 persons



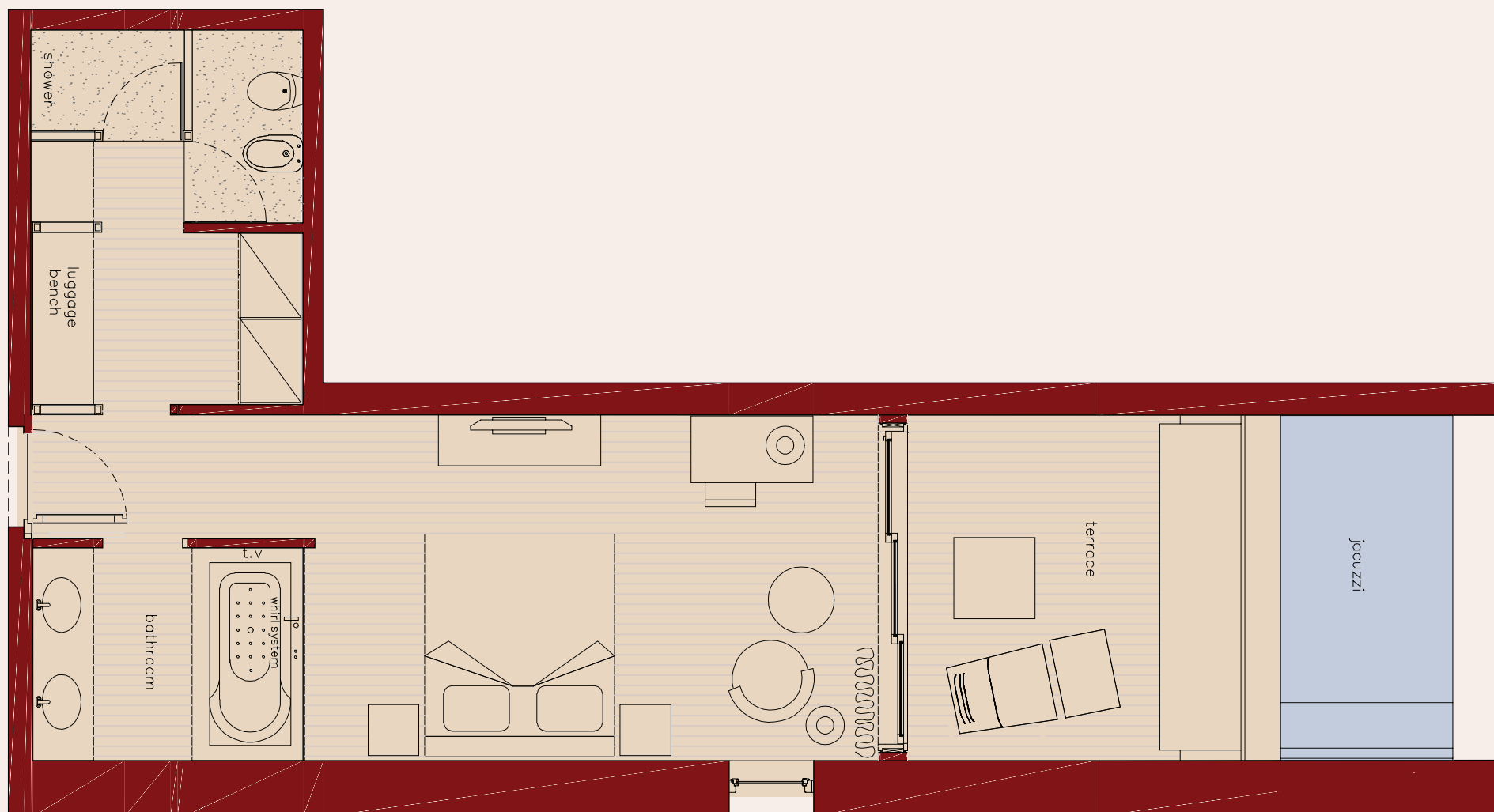
View plan of Luxury Bungalow



NAFPLIA PALACE

Hotel & Villas

Luxury Bungalow sea view with private outdoor Jacuzzi



Room 40 m²

Terrace 12 m²

Jacuzzi 3,6 x 1,95 m

Capacity 2 pax

Deluxe Bungalows sea view with private heated pool

The Deluxe Bungalow (approx. 40sq.m) with private heated pool (heating with charge) consists of one king bedded bedroom, sitting area with sofa and writing desk, marble-clad bathroom with Jacuzzi bathtub, separate walk-in shower with hydro jets and separate W.C.

Special features: Touch panel for regulation of all electronic devices, outdoor touch screen for pool and room lighting, pool jets & temperature indicator.

The Bungalow features air-conditioning/heating, LCD Sat-TV with 44 channels, WiFi internet access with charge, mini bar, safe, hairdryer, slippers, Bulgari toiletries and Frette linen.

Maximum Occupancy: 2 persons

View plan of Deluxe Bungalows

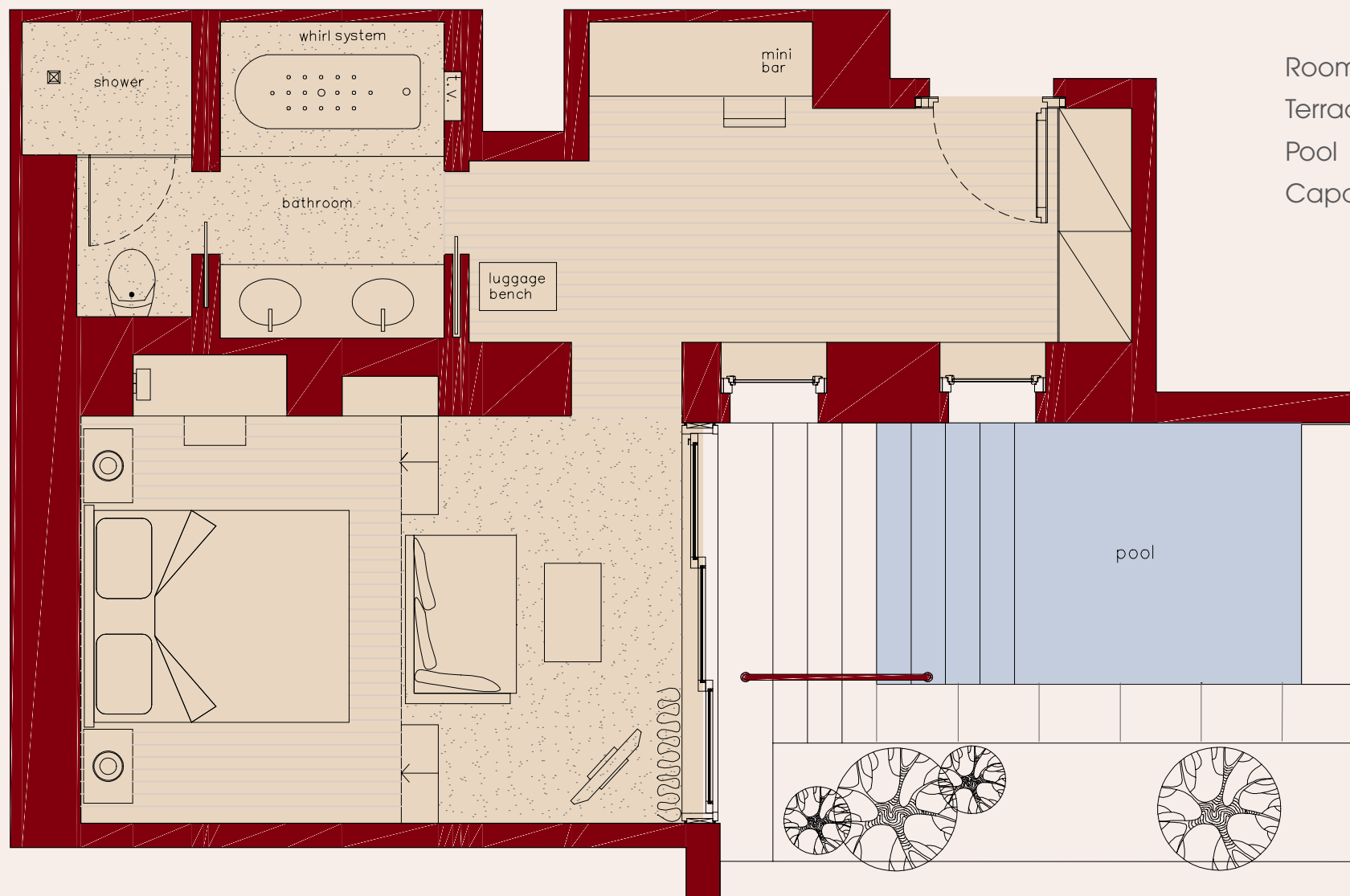




NAFPLIA PALACE

Hotel & Villas

Deluxe Bungalows sea view with private heated pool



Room	40m ²
Terrace	5m ²
Pool	3,6 x 1,95 m
Capacity	2 pax

Luxury Villa sea view with private outdoor Jacuzzi

The king bedded Luxury Villa (50sq.m) with private heated outdoor Jacuzzi features one bedroom with sitting area and writing desk, a spacious marble-clad bathroom with free standing Aerospa bathtub, a separate walk-in shower with hydro-jets and steam bath and a separate W.C.

Special features: Touch panel for regulation of all electronic devices, in bath TV and spacious deck terrace. The Villa features air-conditioning/heating, LCD Sat-TV with 44 channels, WiFi internet access with charge, mini bar, safe, hairdryer, slippers, Bulgari toiletries and Frette linen.

Maximum Occupancy: 2 persons & babycot



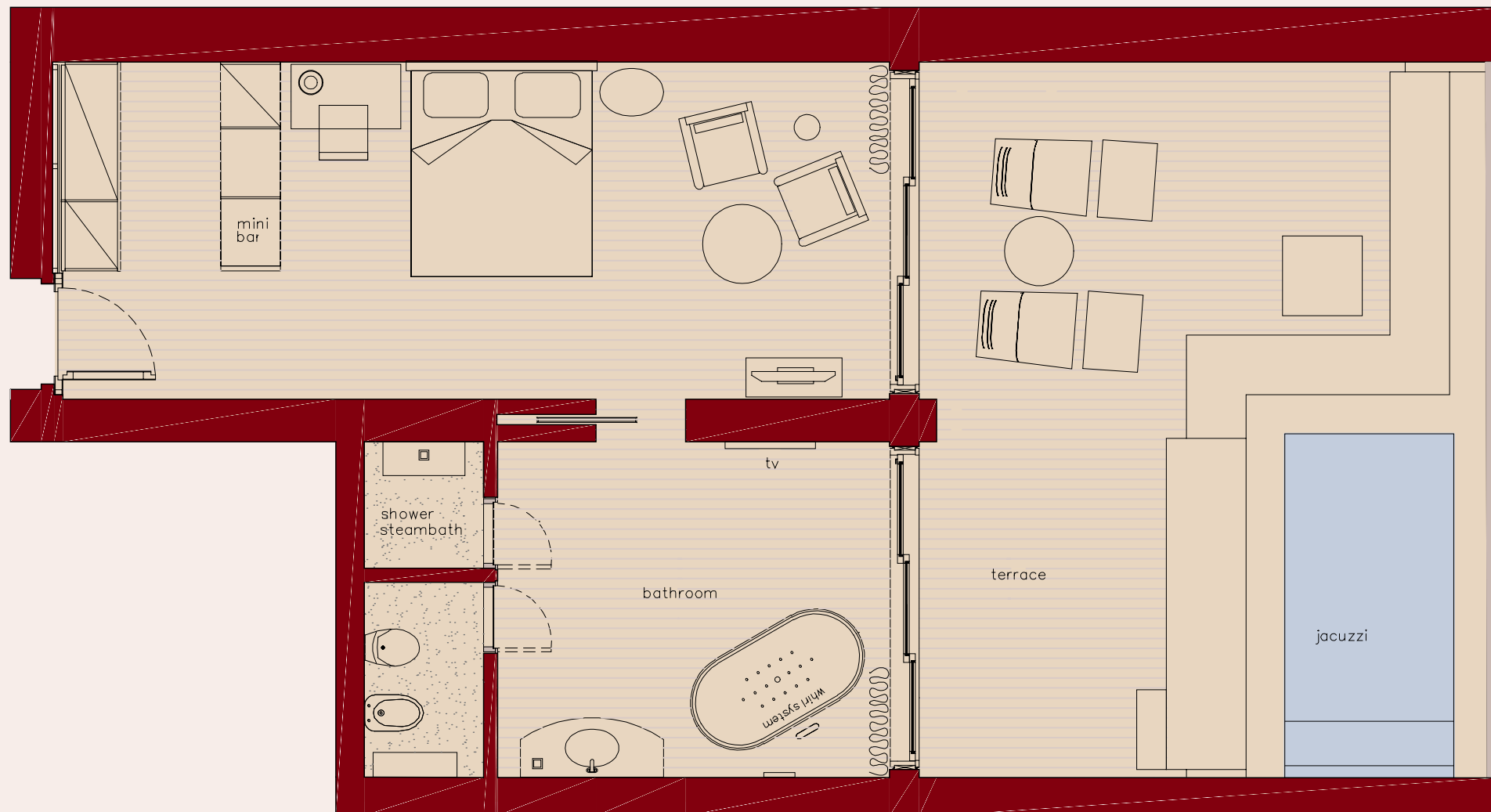
View plan of Luxury Villa



NAFPLIA PALACE

Hotel & Villas

Luxury Villa sea view with private outdoor Jacuzzi



Room 50 m²

Terrace 33 m²

Jacuzzi 3,6 x 1,95 m

Capacity 2 pax

Family Villa sea view

The Family Villas (approx. 60-65 sq.m.) consist of one spacious bedroom with king bed and writing desk, separate living room area with sofa and two bathrooms with Jacuzzi bathtub, separate WC and steam bath with hydrojets in the master bedroom and shower cabin with hydrojets in the second bathroom.

Special features: In-bath TVs in both bathrooms and touch panel for regulation of all electronic devices. Some with spacious deck terrace with dining table and lounge area.

The Villa features air-conditioning/heating, LCD Sat-TV with 44 channels, WiFi internet access with charge, mini bar, safe, hairdryer, slippers, Bulgari toiletries and Frette linen.

Maximum occupancy: 4 persons

[View plan of Family Villa](#)

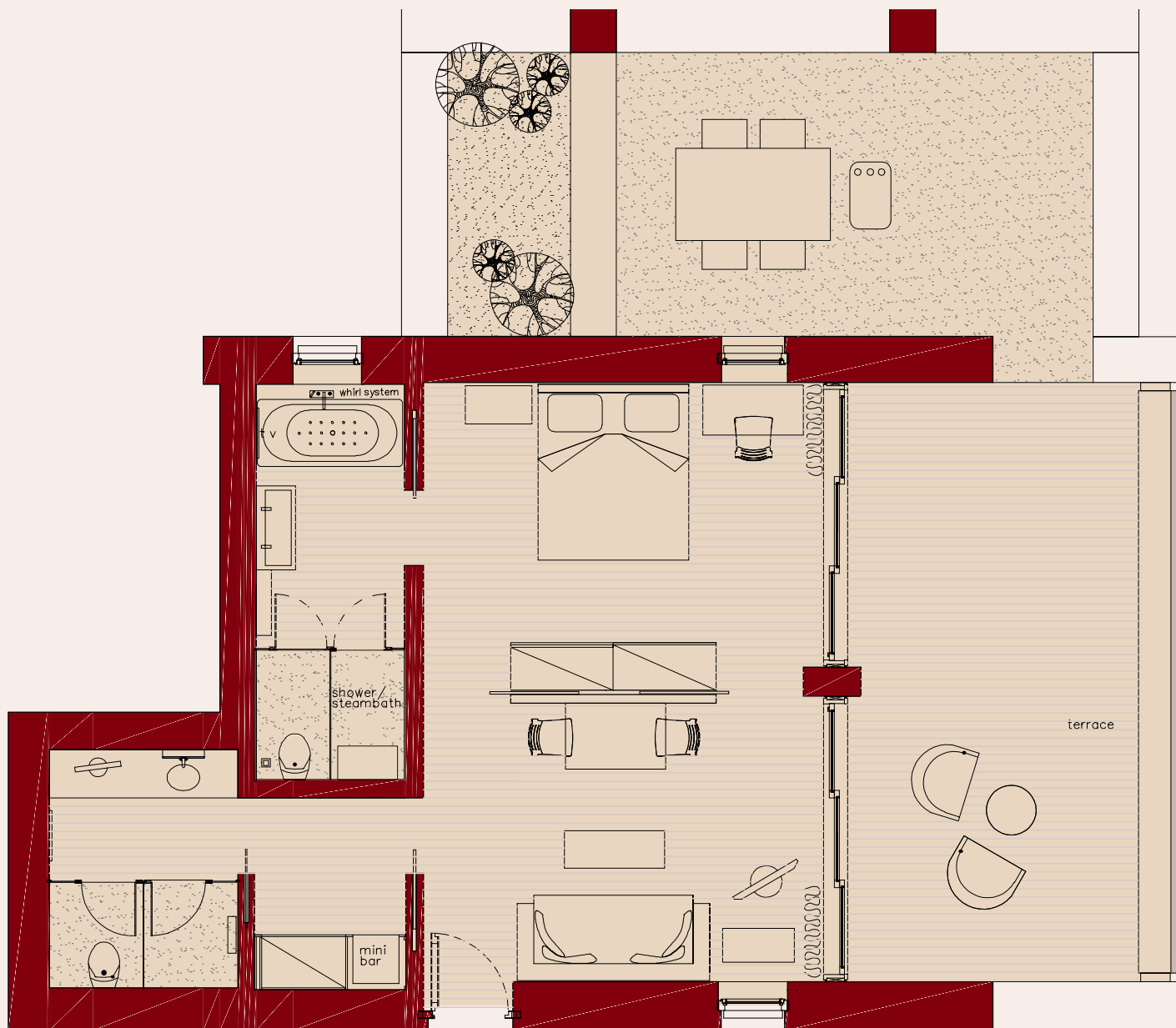




NAFPLIA PALACE

Hotel & Villas

Family Villa sea view



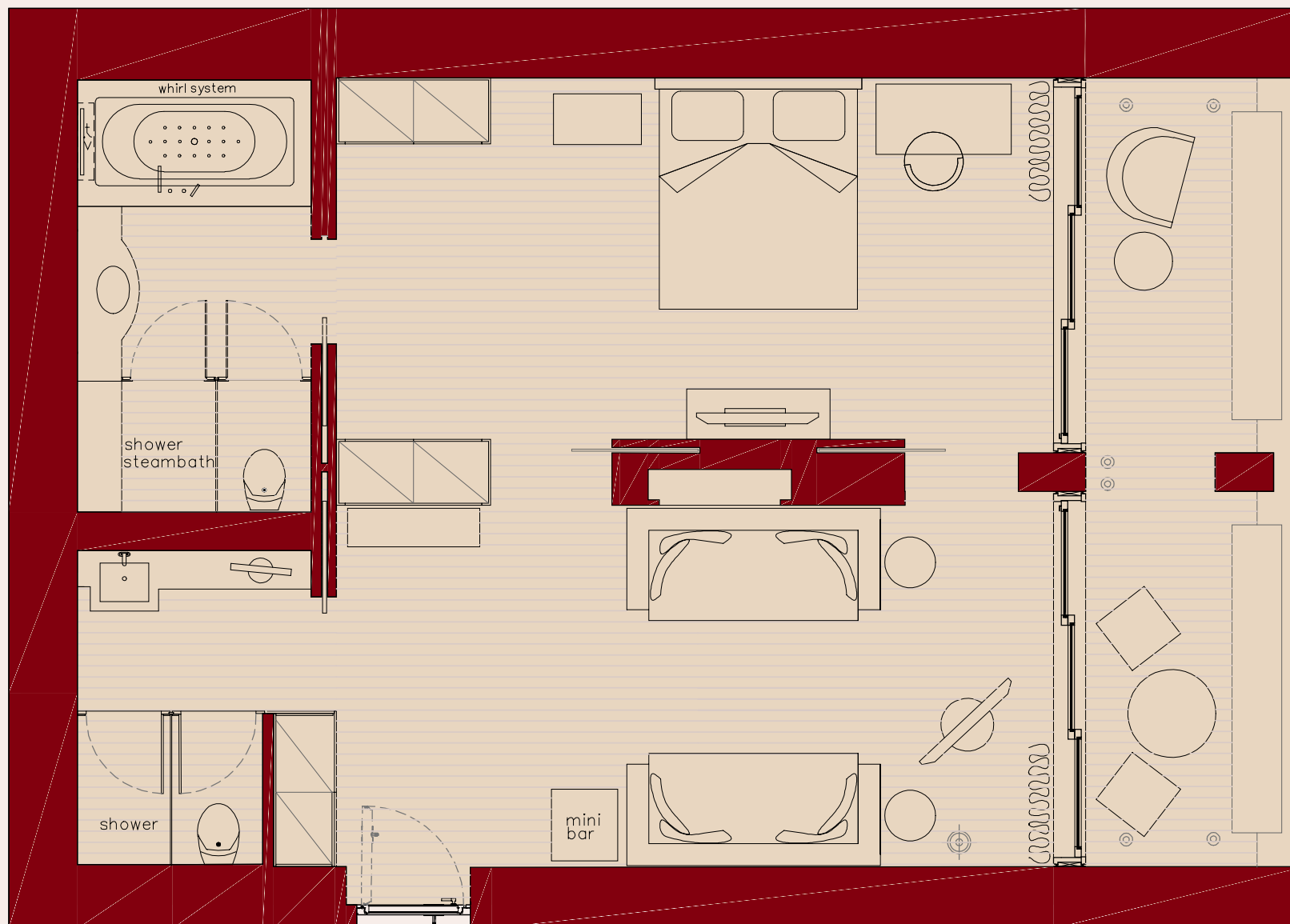
Room	60 m ²
Terrace	45 m ²
Capacity	3-4 pax



NAFPLIA PALACE

Hotel & Villas

Family Villa sea view



Room	63 m ²
Terrace	13 m ²
Capacity	3-4 pax

Luxury Bungalow sea view with private pool

The Luxury Bungalow (40sq.m) with private heated pool consists of one king bedded bedroom with sitting area and writing desk, marble-clad bathroom with Jacuzzi bathtub, separate walk-in shower with hydro jets and separate W.C.

Special Features: In-bath TV, touch panel for regulation of all electronic devices, skylight and fireplace, private heated pool (heating with charge) with fresh water counter current device and pool jets.

The Bungalow features air-conditioning/heating, LCD Sat-TV with 44 channels, clock radio and CD, WiFi internet access with charge, mini bar, safe, hairdryer, slippers, Bulgari toiletries and Frette linen.

Maximum Occupancy: 2 persons
& baby cot



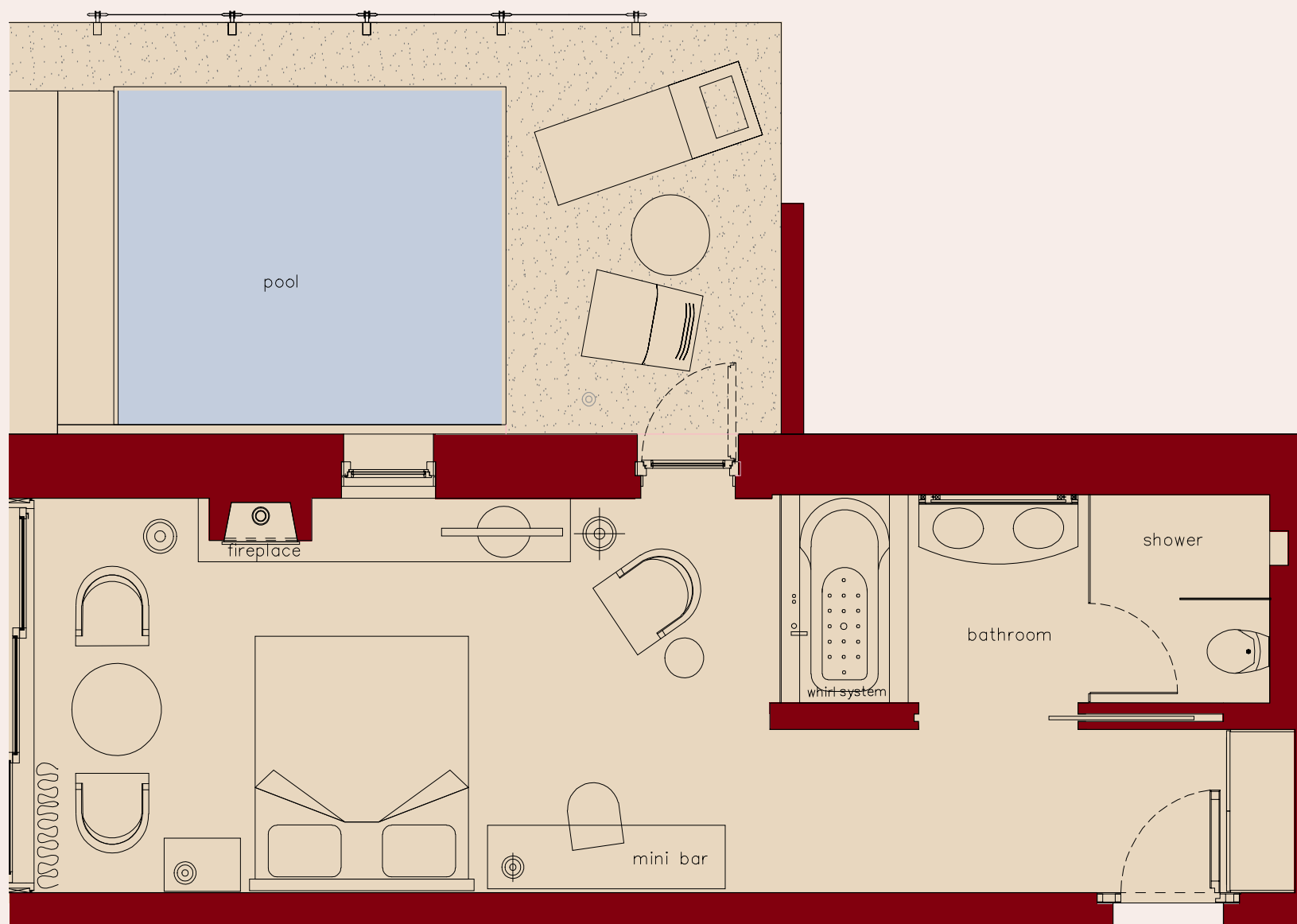
[View plan of Luxury Bungalows](#)



NAFPLIA PALACE

Hotel & Villas

Luxury Bungalow sea view with private heated pool



Room	40 m ²
Terrace	9 m ²
Pool	4 x 3,2 m
Capacity	2 pax

Premier Villa sea view with private heated pool

The Premier Villas of approx. 55-65sq.m with private heated pool feature one bedroom with king size bed, one living room in open plan style and spacious marble-clad bathroom with Jacuzzi bathtub, in bath TV, separate WC and separate walk-in shower with hydro jets.

Special features include: Private heated pool (heating with charge) with fresh water lying next to the ancient walls with counter current device and pool jets, with touch screen for regulation of all electronic operations of the pool. Some Villas include fireplace and spacious private marbled or deck terraces. The Villas feature air-conditioning/heating, in room touch screen for all electronic devices, LCD Sat-TV with 44 channels, clock radio and CD, WiFi internet access with charge, mini bar, safe, hairdryer, slippers, Bulgari toiletries and Frette linen.

Maximum occupancy: 2 adults
& one child

[View plan of Premier Villas](#)

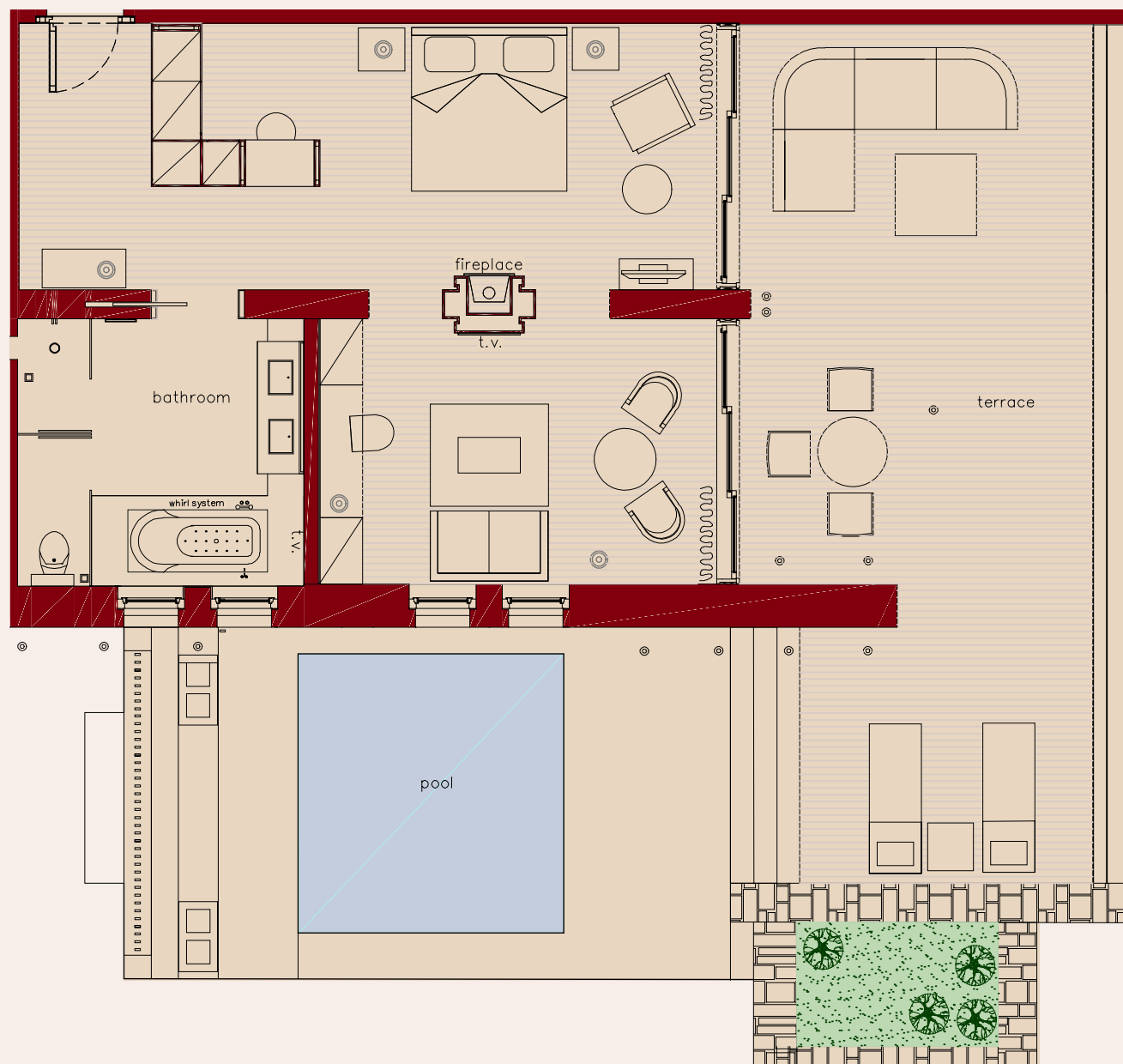




NAFPLIA PALACE

Hotel & Villas

Premier Villa sea view with private heated pool



Room	65 m ²
Terrace	65 m ²
Pool	4 x 4 m
Capacity	2 - 3 pax



NAFPLIA PALACE

Hotel & Villas

Premier Villa sea view with private heated pool



Room 55 m²

Terrace 17 m²

Pool 7,3 x 2,4 m

Capacity 2 -3 pax

Ambassador Spa Villa sea view

The king bedded Villa (85sq.m) with breathtaking view over the bay, features one bedroom with sitting area and walk-in closet, separate living room with fireplace, a spacious marble-clad bathroom with two free standing Aerospa bathtubs, a separate walk-in shower with hydro-jets and steam bath and a separate W.C.

Special features: In-bath TV, Full Home Cinema with Dolby surround system on projector screen in the lounge area, touch screen for regulation of all electronic devices, and spacious deck terrace (43m²).

The Villa features air-conditioning/heating, LCD Sat-TV with 44 channels, WiFi internet access with charge, mini bar, safe, hairdryer, slippers, Bulgari toiletries and Frette linen.

Maximum Occupancy: 2 persons

View plan of Ambassador Spa Villa

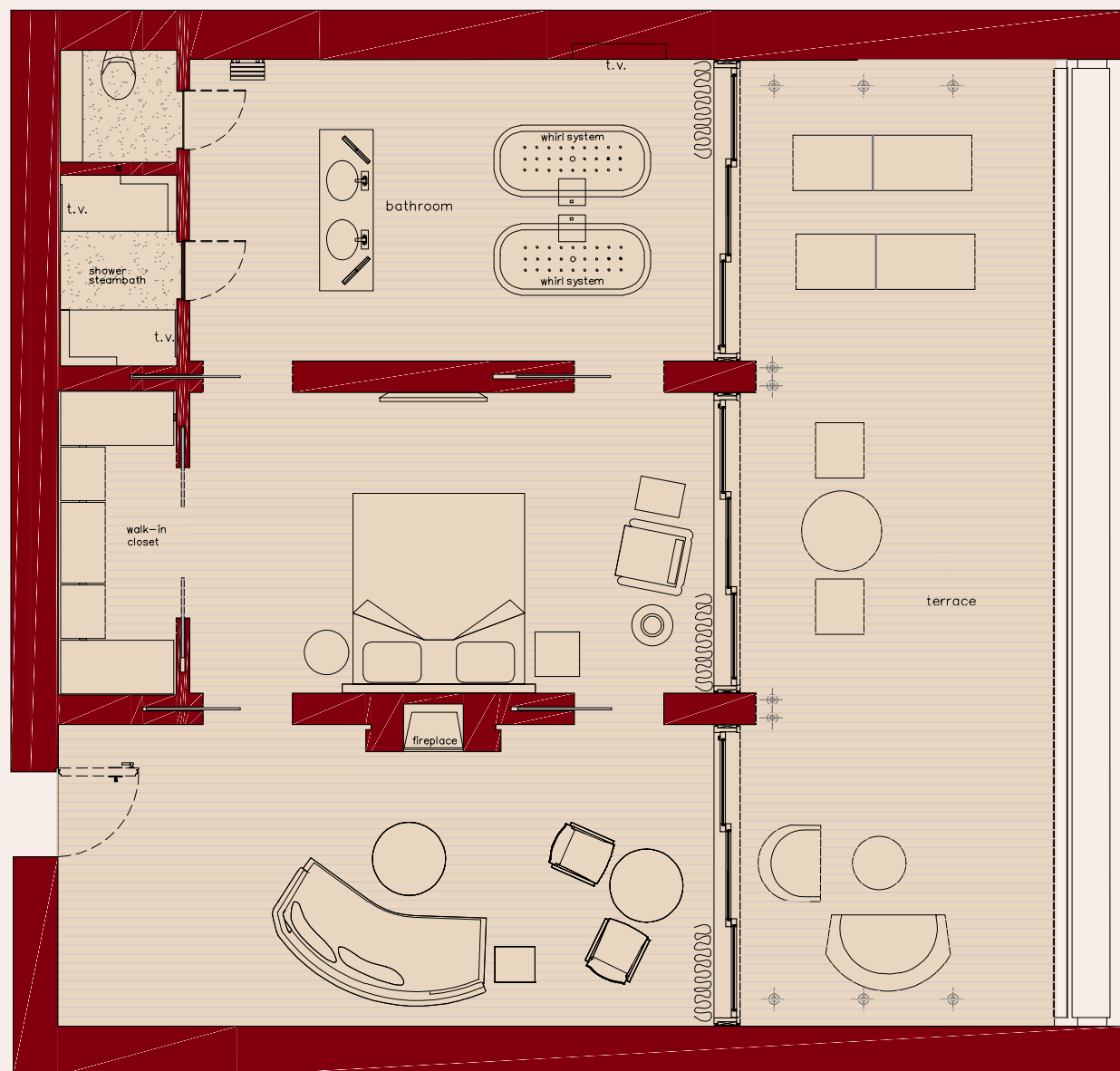




NAFPLIA PALACE

Hotel & Villas

Ambassador Spa Villa sea view



Room 85 m²

Terrace 43 m²

Capacity 2 pax

The Grand Villa sea view

The Grand Villa (80 sq.m.) consists of two bedrooms, with one king bed in the master bedroom and twin beds in the second one, living room area with writing desk and sofa, walk in closet and two bathrooms. Both marble-clad bathrooms include Jacuzzi bathtubs, separate walk-in shower with hydro jets and steam bath in the master bedroom.

Special features: Touch panel for regulation of all electronic devices and spacious deck terrace of 40sq.m. with dining table and lounge area.

The Villa features air-conditioning/heating, LCD Sat-TV with 44 channels, WiFi internet access with charge, mini bar, safe, hairdryer, slippers, Bulgari toiletries and Frette linen.

Maximum occupancy: 4 adults

[View plan of Grand Villa](#)





NAFPLIA PALACE

Hotel & Villas

Grand Villa sea view (2 bedrooms)



Room	80 m ²
Terrace	40 m ²
Capacity	3 - 4 pax

The Grand Family Villa sea view

The Grand Villa (105 sq.m.) consists of three bedrooms, with king bed in two bedrooms and twin beds in the third room, living room area with writing desk and sofa, walk in closet and three bathrooms. The Villa includes 3 marble clad bathrooms with Jacuzzi bathtubs, in two of them, separate shower cabin with hydrojets and steambath in two bathrooms.

Special features: Touch panel for regulation of all electronic devices and spacious deck terrace of 50sq.m. with dining table and lounge area.

The Villa features air-conditioning/heating, LCD Sat-TV with 44 channels, WiFi internet access with charge, mini bar, safe, hairdryer, slippers, Bulgari toiletries and Frette linen.

Maximum occupancy: 6 adults & baby cot

[View plan of Grand Villa](#)

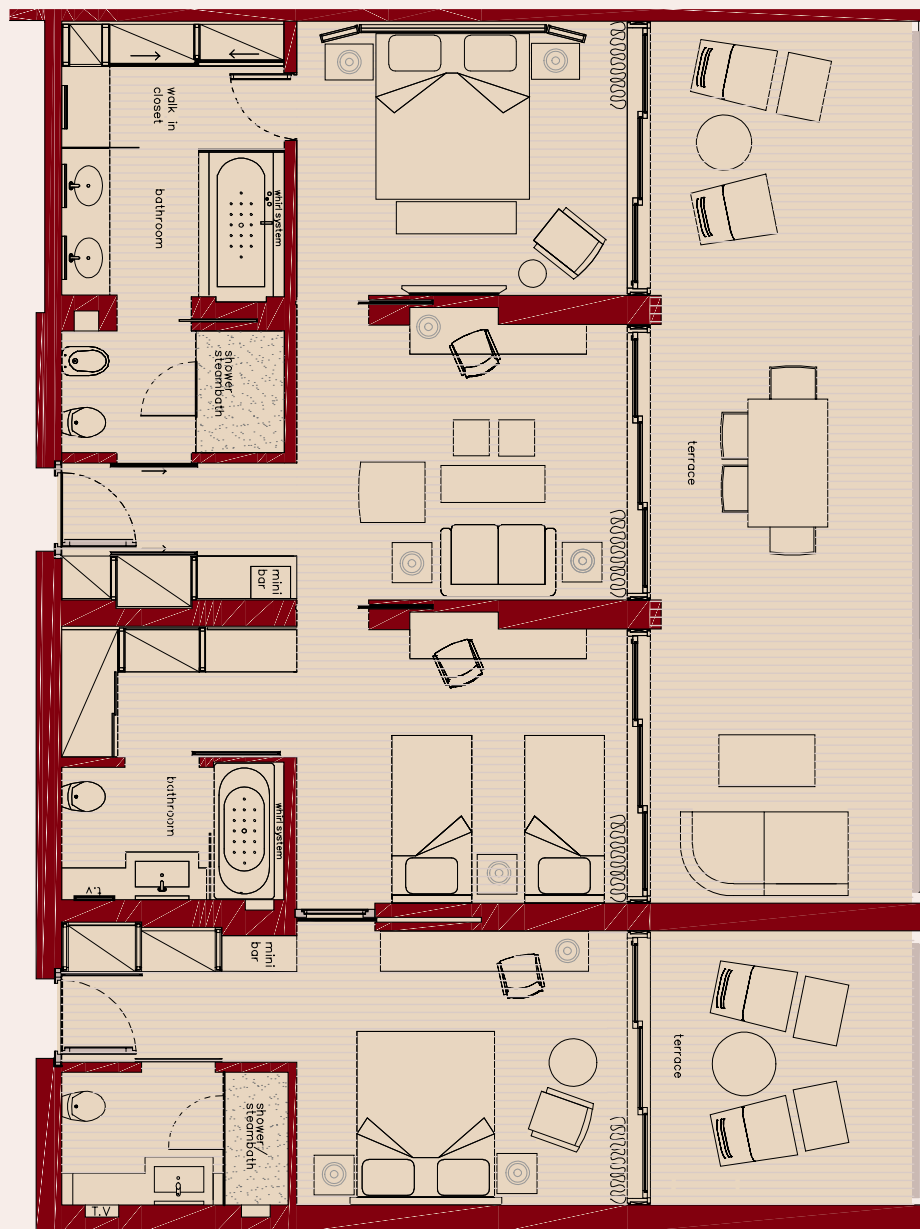




NAFPLIA PALACE

Hotel & Villas

Grand Family Villa sea view (3 bedrooms)



Room	105 m ²
Terrace	50 m ²
Capacity	4-6 pax

Island Villa sea view with private heated pool

The Island Villa (50sq.m) with private heated pool features one bedroom with king size bed, sitting area with writing desk, one marble-clad bathroom with Jacuzzi bathtub, separate WC and separate walk-in shower with hydro jets and steam bath.

Special features include: Private heated pool (heating with charge) with fresh water with counter current device and pool jets, touch screen for regulation of all electronic operations of the pool and spacious marble terrace with dining table and lounge area.

The Villa features air-conditioning/heating, in-bath TV, in room touch screen for regulation of all electronic devices LCD Sat-TV with 44 channels, WiFi internet access with charge, mini bar, safe, hairdryer, slippers, Bulgari toiletries and Frette linen.

Maximum occupancy: 2 persons



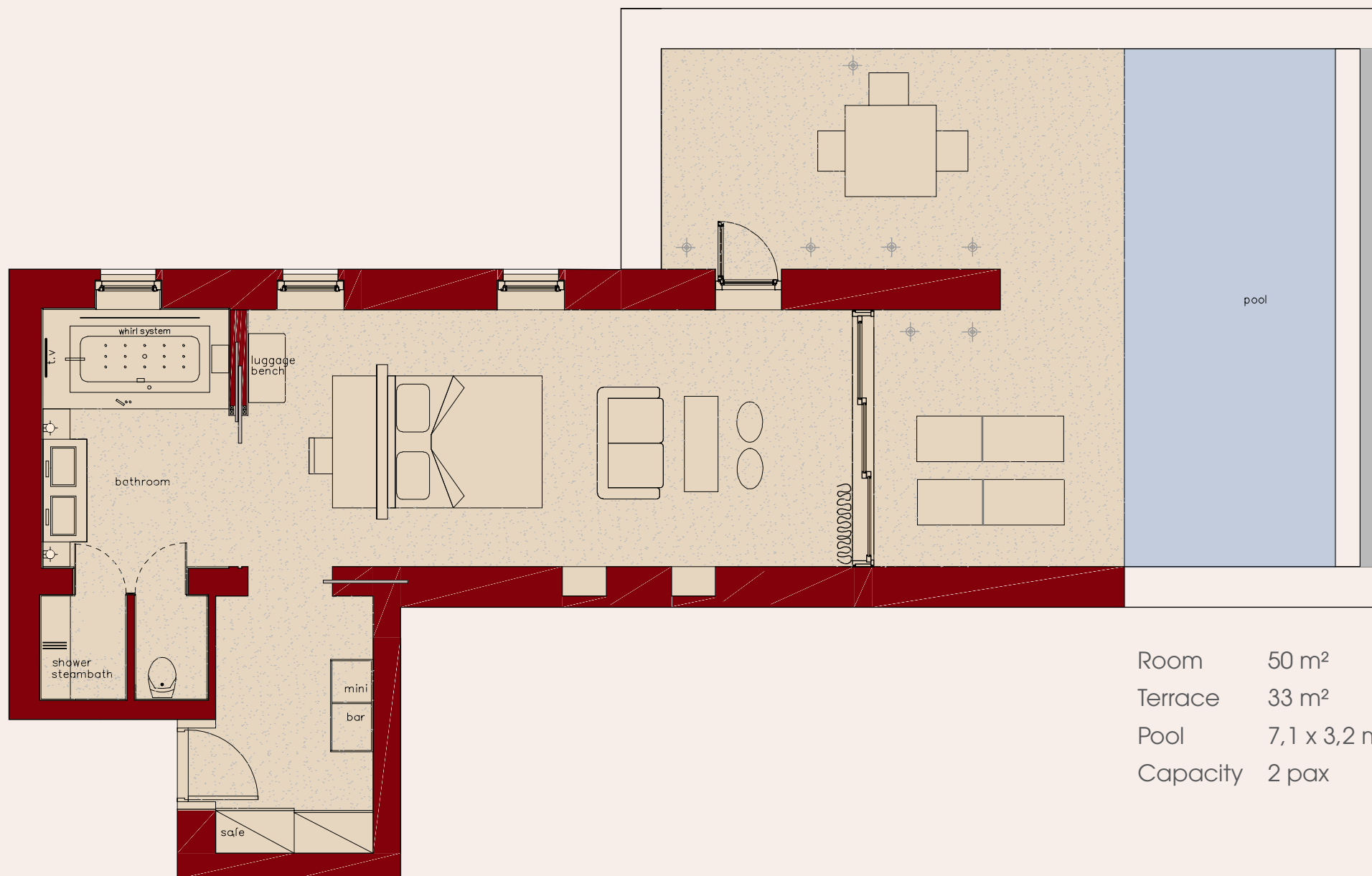
[View plan of Island Villa](#)



NAFPLIA PALACE

Hotel & Villas

Island Villa sea view with private heated pool



Ambassador Villa sea view with private heated pool

The Ambassador Villas (approx. 60-90sq.m) with private heated pool feature one bedroom with king size bed, one living room in open plan style, walk in closet and spacious marble-clad bathroom with Aerospa or Jacuzzi bathtub, some with chromotherapy, separate WC, spacious walk-in shower with hydro-jets and steam bath, in bath TV and in room touch screen for regulation of all electronic devices.

Special features include: Private heated pool (heating with charge) with fresh water next to the ancient walls with counter current device and pool jets. Some villas include gym area, fireplace, kitchenette and spacious marble terraces.

The Villas feature air-conditioning/heating, LCD Sat-TV with 44 channels, clock radio and CD, Wi-Fi internet access with charge, mini bar, safe, hairdryer, slippers, Bulgari toiletries and Frette linen.

Maximum Occupancy: 2 persons
& one child



View plan of Ambassador Villa



NAFPLIA PALACE

Hotel & Villas

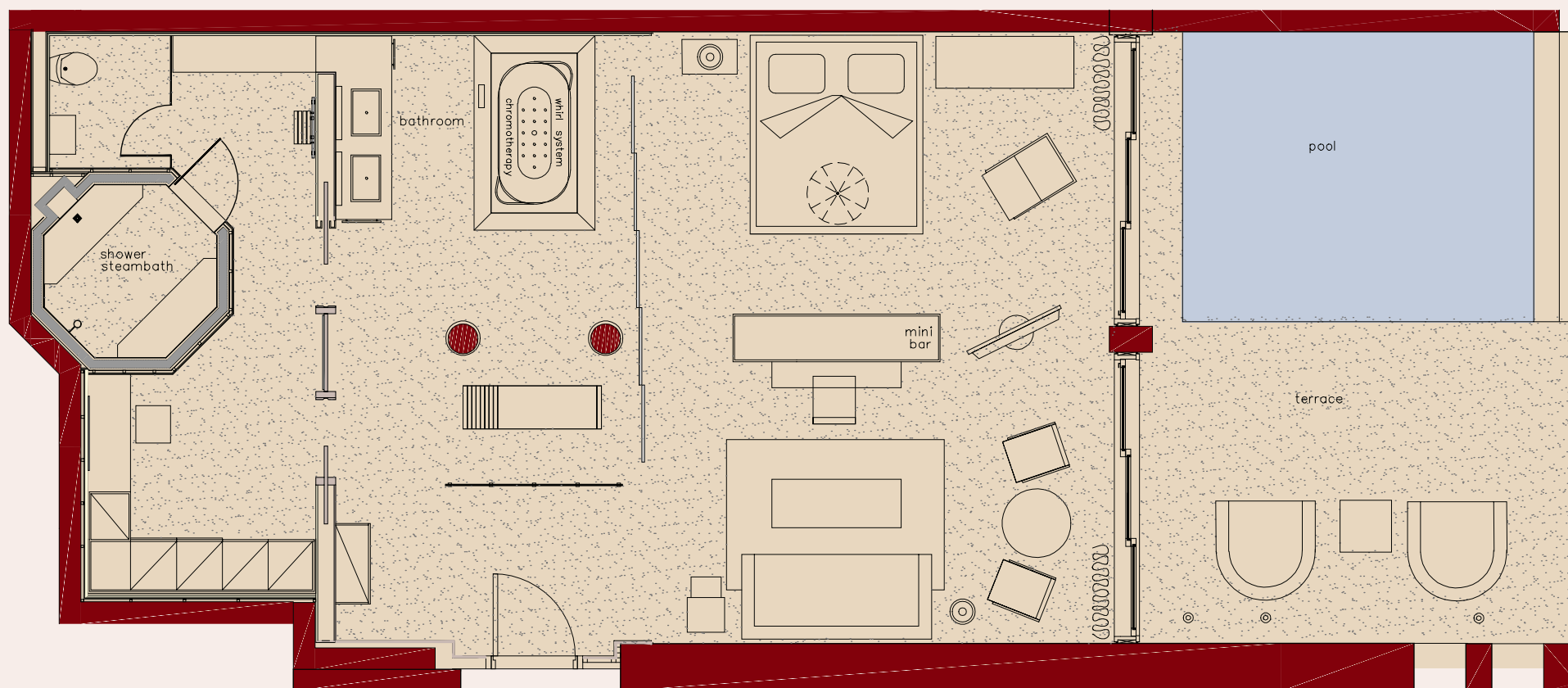
Ambassador Villa sea view with private heated pool

Room 85 m²

Terrace 18 m²

Pool 4,8 x 3,5m

Capacity 2 -3 pax

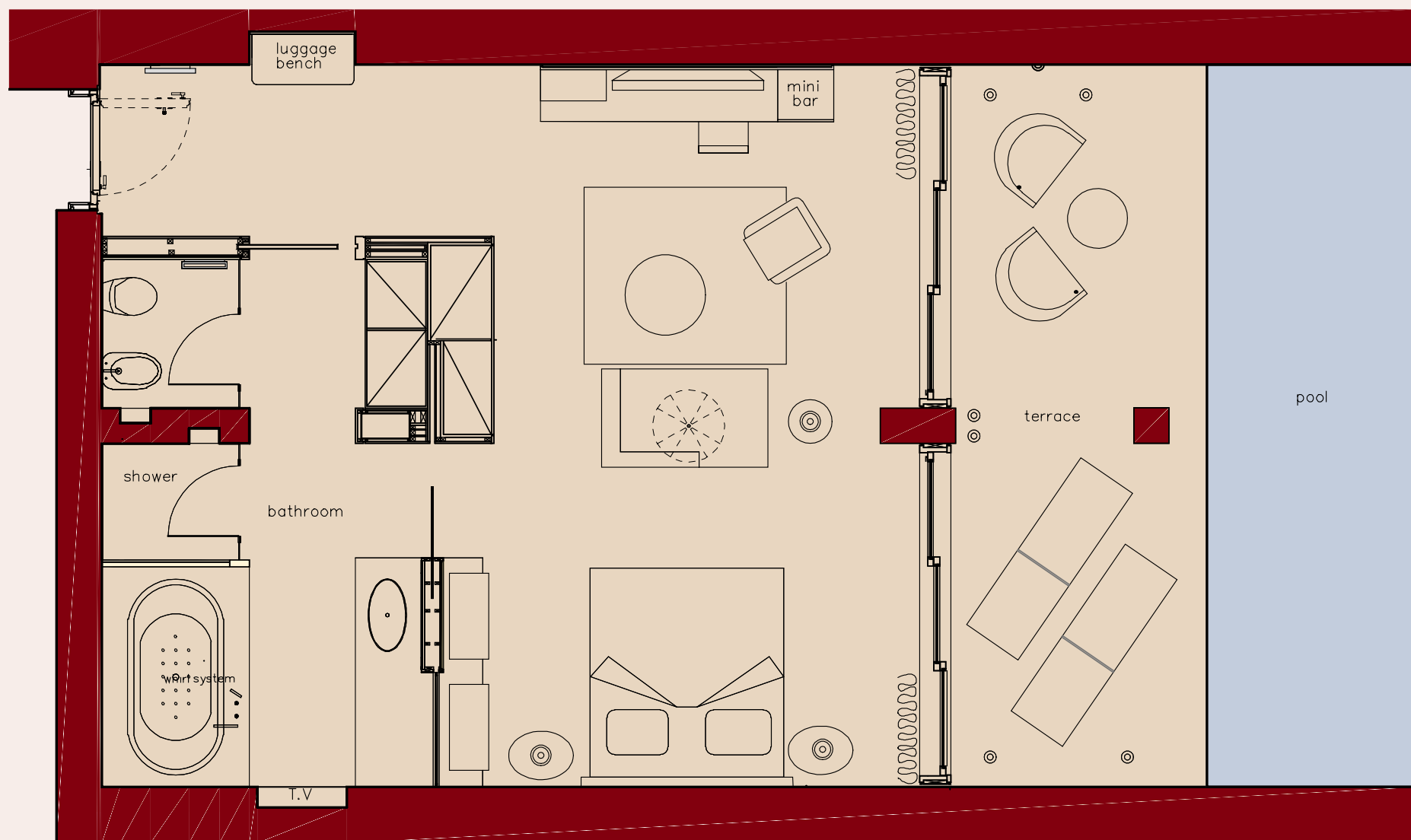




NAFPLIA PALACE

Hotel & Villas

Ambassador Villa sea view with private heated pool



Room 60 m²

Terrace 15 m²

Pool 7,2 x 2,7 m

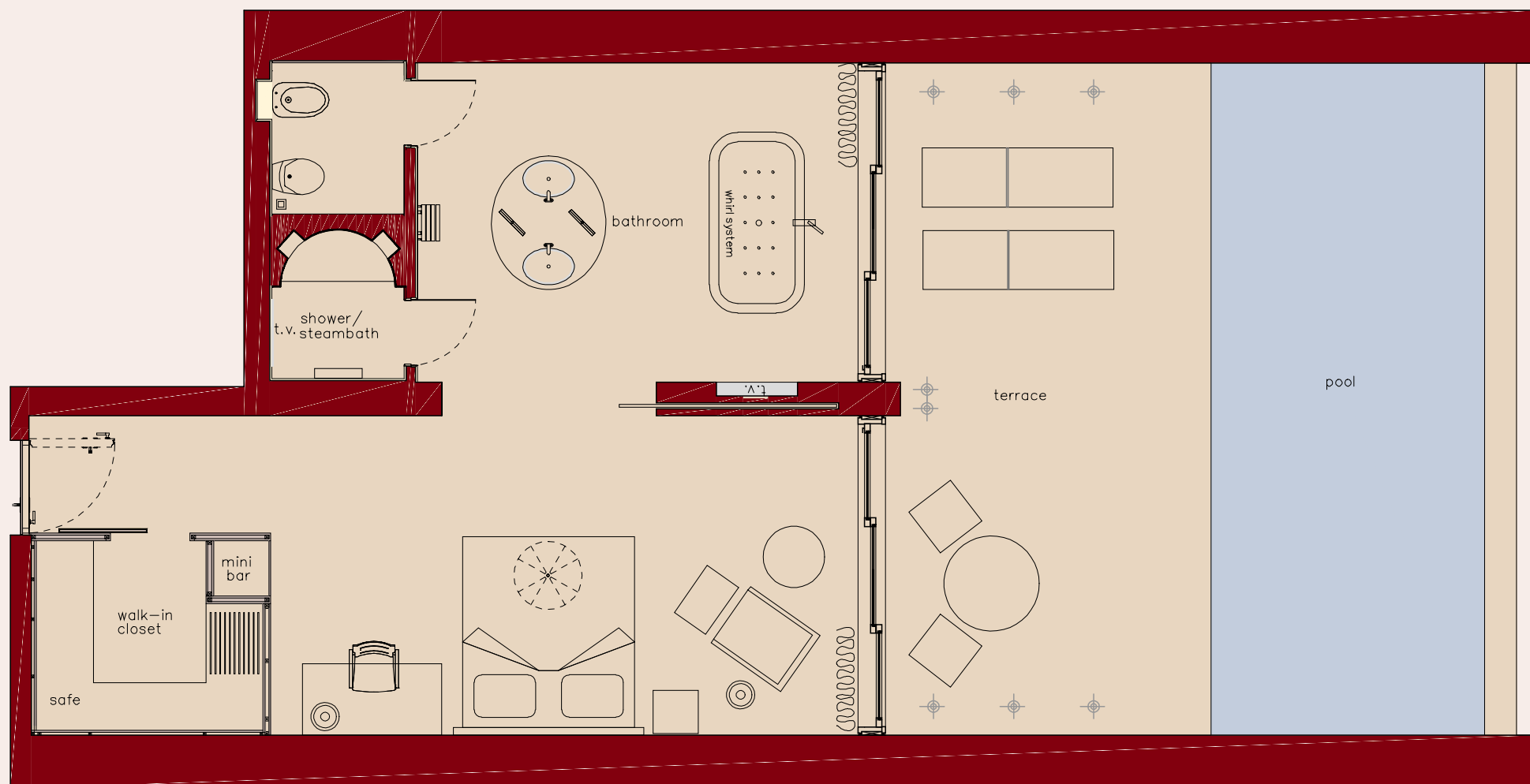
Capacity 2 pax



NAFPLIA PALACE

Hotel & Villas

Ambassador Villa sea view with private heated pool



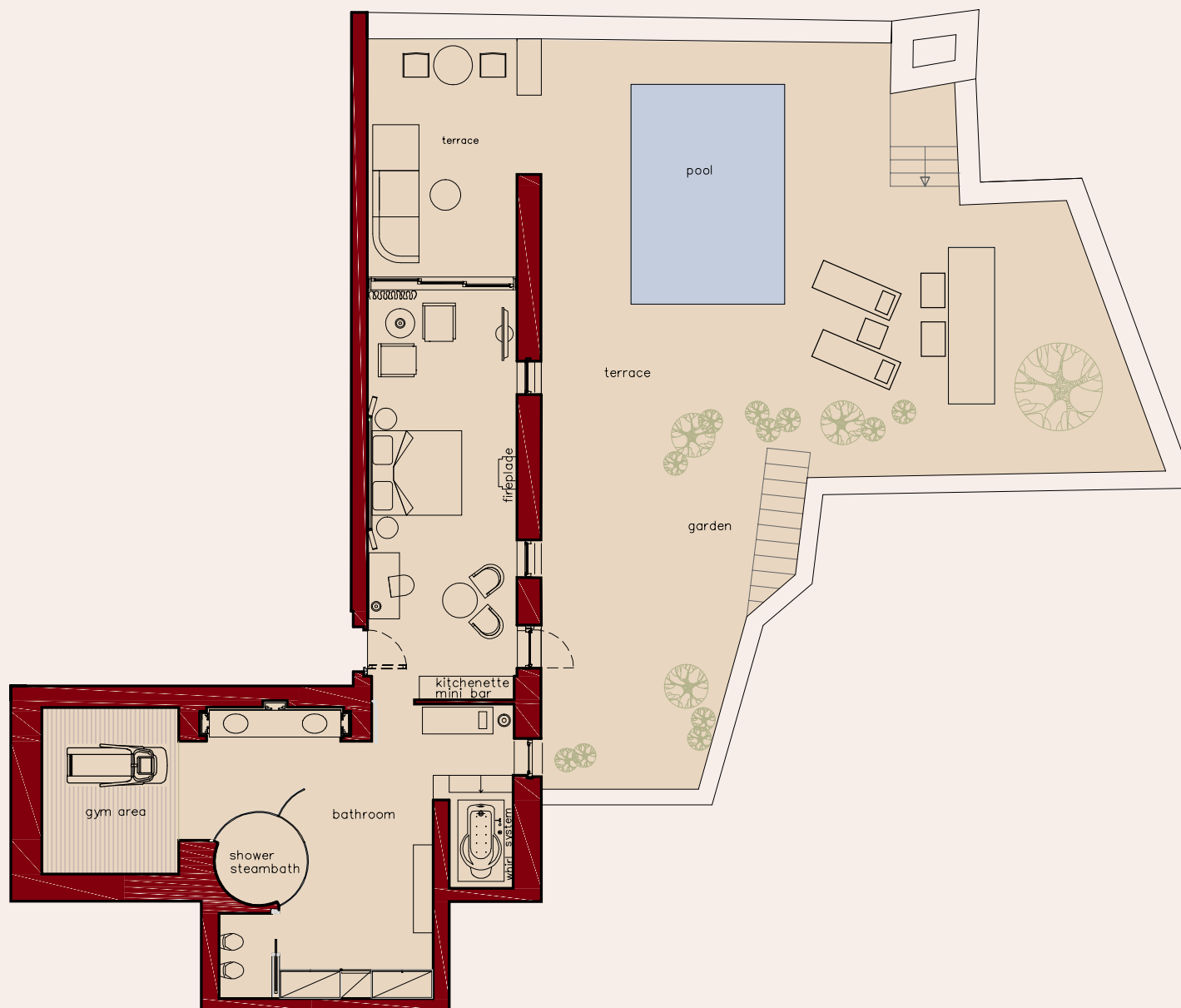
Room	60 m²
Terrace	15 m²
Pool	7,2 x 2,7 m
Capacity	2 pax



NAFPLIA PALACE

Hotel & Villas

Ambassador Villa sea view with private heated pool



Room	90 m ²
Terrace	55 m ²
Pool	6,1 x 3,6m
Capacity	2 - 3 pax

Palace Villa sea view (2 bedroom) with private heated pool

The Palace Villa (100 sq.m.) with private heated pool is composed of two bedrooms with one king size bed in the master bedroom and twin beds in the second room, one lounge with dining area and kitchenette, walk in closet, two bathrooms and spacious marble terrace with sun beds, dining and lounge area with stunning view of the sea and Venetian isle of Bourtzi.

The two spacious marble-lined bathrooms feature Jacuzzi bathtub (Alessi lighted bathtub in the master bedroom), separate WC, separate shower cabins with hydro-jets, and spacious steam bath in the Master bedroom.

The Villa includes a 10mts heated pool (heating with charge) with fresh water equipped with counter current device and pool jets.

Special features include: TV in bathrooms and steam bath, Full Home Cinema with Dolby surround system on projector screen (2,5m), and wireless touch screen for regulation of all electronic devices.

The Villa features air-conditioning/heating, LCD Sat-TV with 44 channels, WiFi internet access with charge, mini bar, safe, hairdryer, slippers, Bulgari toiletries and Frette linen.

Maximum Occupancy: 4 adults



[View plan of Palace Villa](#)



NAFPLIA PALACE

Hotel & Villas

Palace Villa sea view with private heated pool



Room	100 m ²
Terrace	22 m ²
Pool	11 x 3,6m
Capacity	2 - 4 pax

Family Hotel Suite sea view

The Family Hotel Suites (75 sq.m.) are situated in the Main Building. They consist of one bedroom with twin beds, writing desk and a separate living room area with sofa bed, one marble lined bathroom with bathtub, one separate W.C. and two private balconies with views over the sea and the fortified isle of Bourtzi.

These air-conditioned rooms have Wi-Fi internet access with charge, hairdryer, slippers, bathrobes, TV and mini bar.

Maximum Occupancy: 4 persons



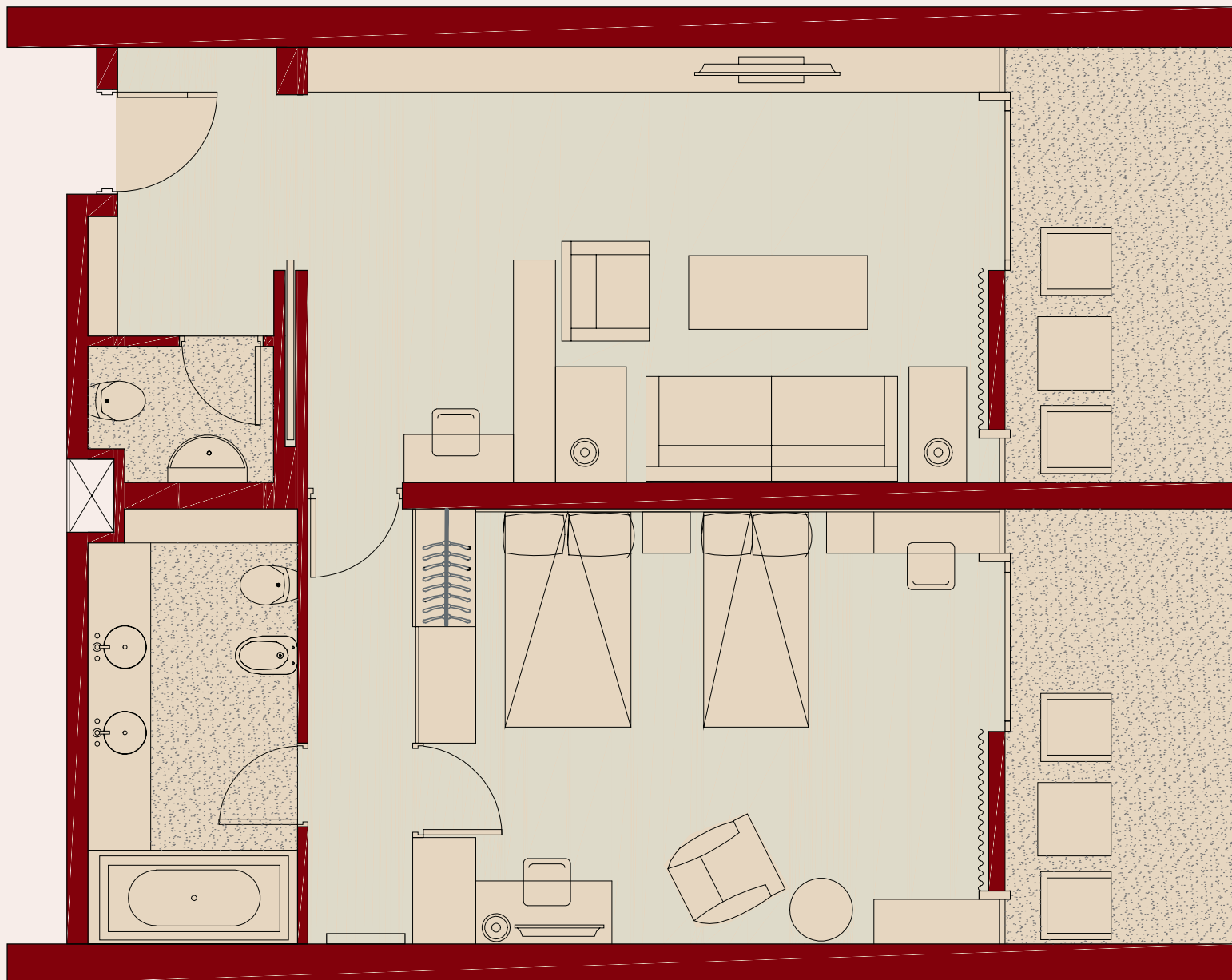
[View plan of Family Hotel Suite](#)



NAFPLIA PALACE

Hotel & Villas

Family Hotel Suite sea view



Room 75 m²

Capacity 2 - 4 pax

Hotel Room sea view

The twin bedded Hotel Rooms (35 sq.m.) are situated in the main building. They consist of one spacious bedroom, one marble lined bathroom with bathtub and a private balcony, with views across the bay and Venetian fortified island of Bourtzi.

These air-conditioned rooms have Wi-Fi internet access with charge, hairdryer, slippers, bathrobes, TV and mini bar.

Maximum Occupancy: 3 persons & baby cot

View plan of a standard room





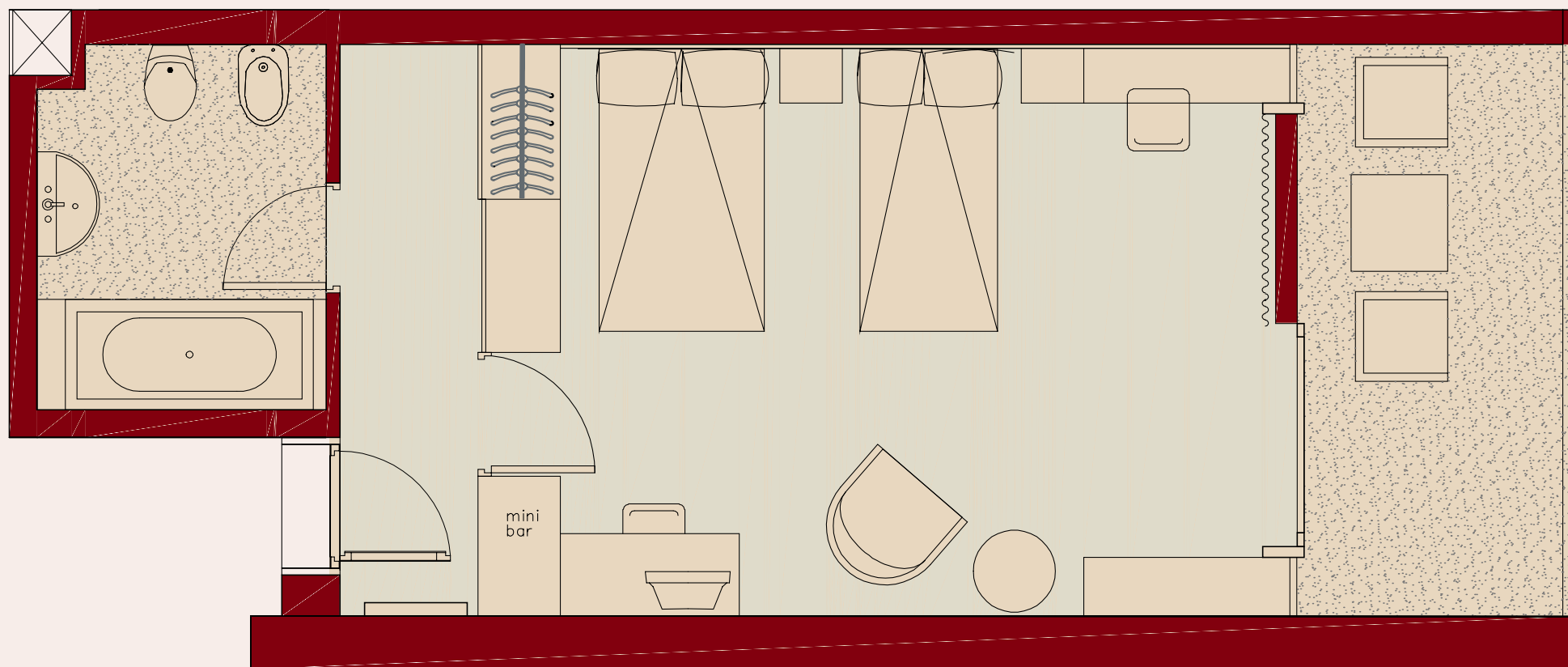
NAFPLIA PALACE

Hotel & Villas

Standard Room with sea view

Room 35 m²

Capacity 2 - 3 pax



Luxury Hotel Room sea view

The Luxury Rooms (35 sq.m.) are situated in the main building. They consist of one spacious bedroom, one marble-clad bathroom with Aerospa bathtub and separate walk-in shower. The state of art equipment includes in – bath TV and touch panel for regulation of all electronic devices. All with private balcony offering panoramic views of the bay and the Venetian fortified island of Bourtzi. The Rooms feature air-conditioning/heating, LCD Sat-TV with 44 channels, Radio-CD Player, Wi-Fi internet access with charge, mini bar, safe, hairdryer, slippers, Bulgari toiletries and Frette linen.

Maximum Occupancy: 3 persons



View plan of luxury room



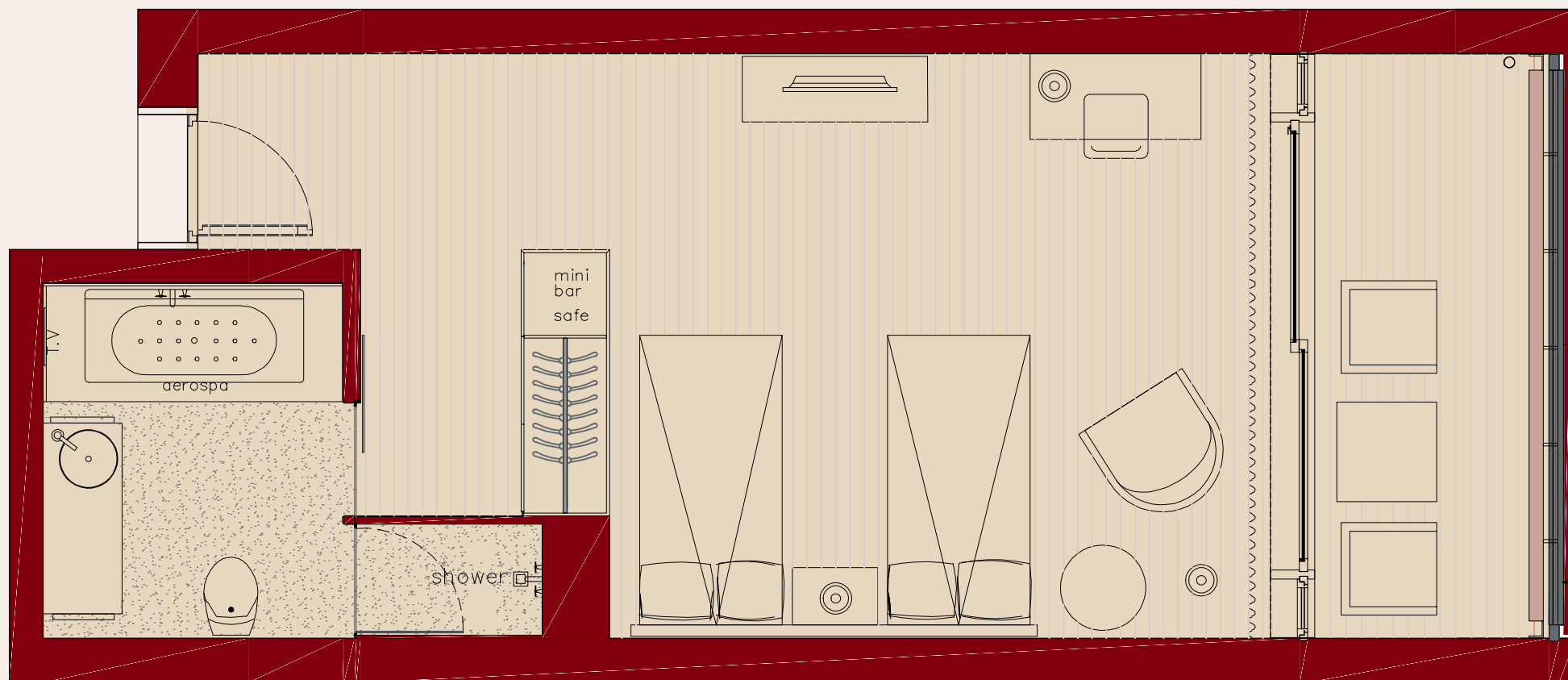
NAFPLIA PALACE

Hotel & Villas

Luxury Room with sea view

Room 35 m²

Capacity 2 - 3 pax



Amimoni restaurant

Gourmet Five Star Diamond Awarded à la carte restaurant with extensive wine list, under the care of the famous Greek chef Y. Baxevanis. Amimoni features live music and the most fabulous views through floor-to-ceiling glass windows.

Indoor capacity	74
Outdoor capacity	40
Outdoor ground floor capacity	200



Ilios restaurant

The Ilios restaurant with pool view provides hot and cold buffet for breakfast with fresh traditional products, health food and drinks served in the main restaurant. Business lunches, dinners and galas can be perfectly organised in this indoor or outdoor venue.

Indoor capacity	230
-----------------	-----

Outdoor capacity	100
------------------	-----

Outdoor pool area capacity	120
----------------------------	-----



Kafenion

Traditional Greek Kafenion and bar by the pool overlooking the bay in a magnificent landscape.

The menu features a variety of grills and dishes including homemade “meze” of Greek dishes, fresh salads, a selection of desserts and a refreshing selection of ice creams.

Indoor capacity 25

Outdoor capacity 200



Bar

The stylish, elegant lounge bar is a perfect place to relax at anytime of the day. With light meals and drinks brought to you by our ever attentive staff, this sophisticated setting is waiting to be experienced.

From the terrace survey the changing panorama of the bay of Argolis.



Restaurant Votsala & Sea Bar

The stylish Restaurant Votsala & Sea Bar with extraordinary views to Palamidi castle and Akronafplia.

Sited on the Hotel managed beach front it offers a selection of Greek dishes and is ideal for weddings, banquets or private parties.

Operates May to September

Outdoor restaurant capacity 48

Outdoor banquets 480

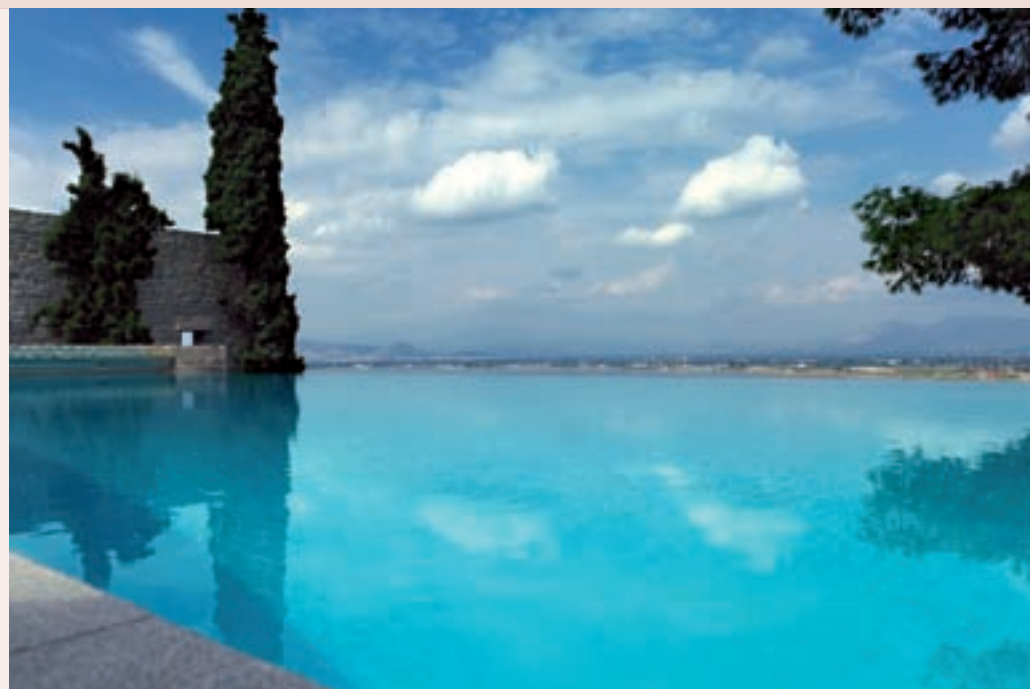


Pools

The fresh water swimming pool at the hotel is a sparkling delight with umbrellas, sun-beds and pool side drinks available.

An infinity pool is provided for the exclusive use of villa guests.

16 of the villas also benefit from their own private pool or outdoor Jacuzzi.



The Nafplia Spa & Beauty Centre

The Nafplia Spa & Beauty Centre offers holistic rejuvenation against a back drop breathtaking sea views. The treatments will complement mind, body and soul to create a healthy inner and beautiful outer in perfect harmony.

The spa services include a range of beauty treatments, body scrubs, wraps, waxing, massages and manicures.

Full spa days are available with a complementary package of treatments.



Arvanitia Beach

For those who prefer to swim in the sea, the hotel managed Arvanitia Beach is the perfect location with sun-beds, umbrellas and changing cabins. A drinks service is available for delivery to your sun-bed.

The stylish Restaurant Votsala & Sea Bar is open during the summer (May to September) with extraordinary views to Palamidi castle and Akronafplia.



SERVICES

Nafplia Palace guest services

24 hour concierge services.

Room service with special menu (07.00am – 01.00am).

Secretarial and business services.

Butler service for exclusive and platinum club guests.

Express check-in/express check-out.

Excursions, airline information.

Postal services/express courier service.

Lunch baskets.

Laundry service.

Valet parking.

Hairdresser (request).

Car and yacht hire.

Baby cots.

Baby sitting service upon request.

Housekeeping attention twice daily.

Medical care on call 24-hours – pharmacy 700m
– hospital 1 km from hotel in Nafplion.

Limousine and helicopter service upon request.

Wi-Fi Internet access in all areas.



Meetings and Events at Nafplia Palace

Spacious and contemporary event facilities, with advanced support from the dedicated staff in refined surroundings all combine to create the ideal setting for a flawless event or corporate meeting. Light and airy spaces provide for flexible environments which spill out onto the terrace enjoying the most captivating views of the bay.



Theatre



Classroom



U Shape



Boardroom



Banquet

Kapodistrias	190	126	60	68	120
Nafplios	120	68	48	56	80
Palamidis	81	64	32	36	50
Ilios	316	204	72	80	260
Epidauros at Amphitryon Hotel	60	28	22	24	40
Romania at Amphitryon Hotel	-	-	-	10	-



Amphitryon Hotel Overview

The exciting Amphitryon Hotel, one of the **Leading Hotels of the World** introduces the discerning guests to the first and only boutique hotel at the edge of picturesque Nafplion. Brand new refined design complements exceptional service to offer its business and leisure guests a new level of sophistication and luxury with an intimate and personal touch.

Bordering the historic and extremely graphic city centre of Nafplion, below the 3rd century BC Acropolis, at an exquisite seafront location, with a widescreen view to the fortified isle of Bourtzi and the bay. All guests can use the facilities of the sister hotel Nafplia Palace Hotel & Villas.

contemporary
refinement



Amphitryon Hotel rooms

The 39 rooms, from 22 to 26m² all have a widescreen view to the Bay of Nafplion and the isle of Bourtzi. They combine the comfort of home with a high level of personalised service.

Superior room

Deluxe room with shower

Deluxe room

Executive room

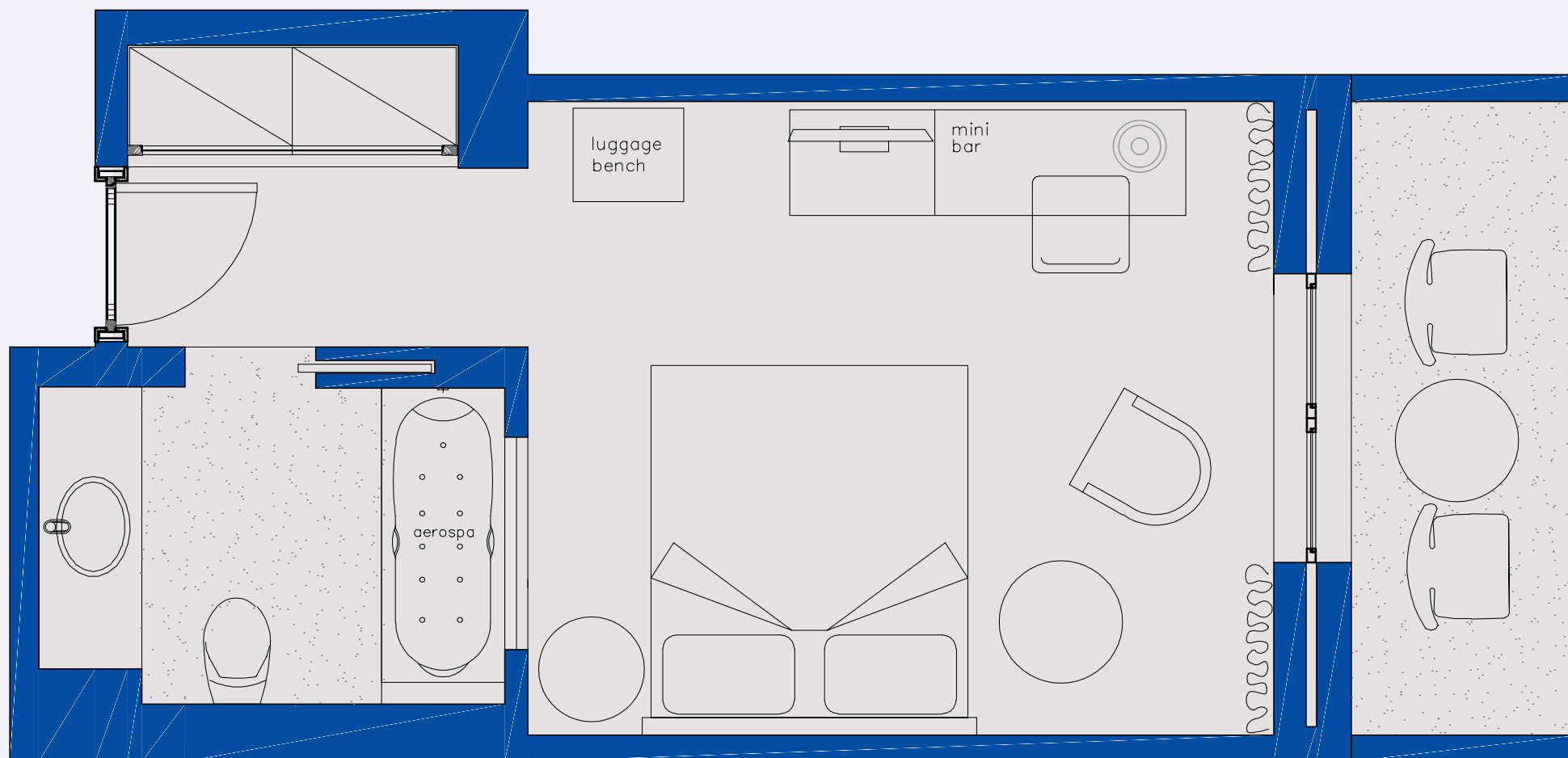
View plan of room



Superior Room sea view

Room 26 m²

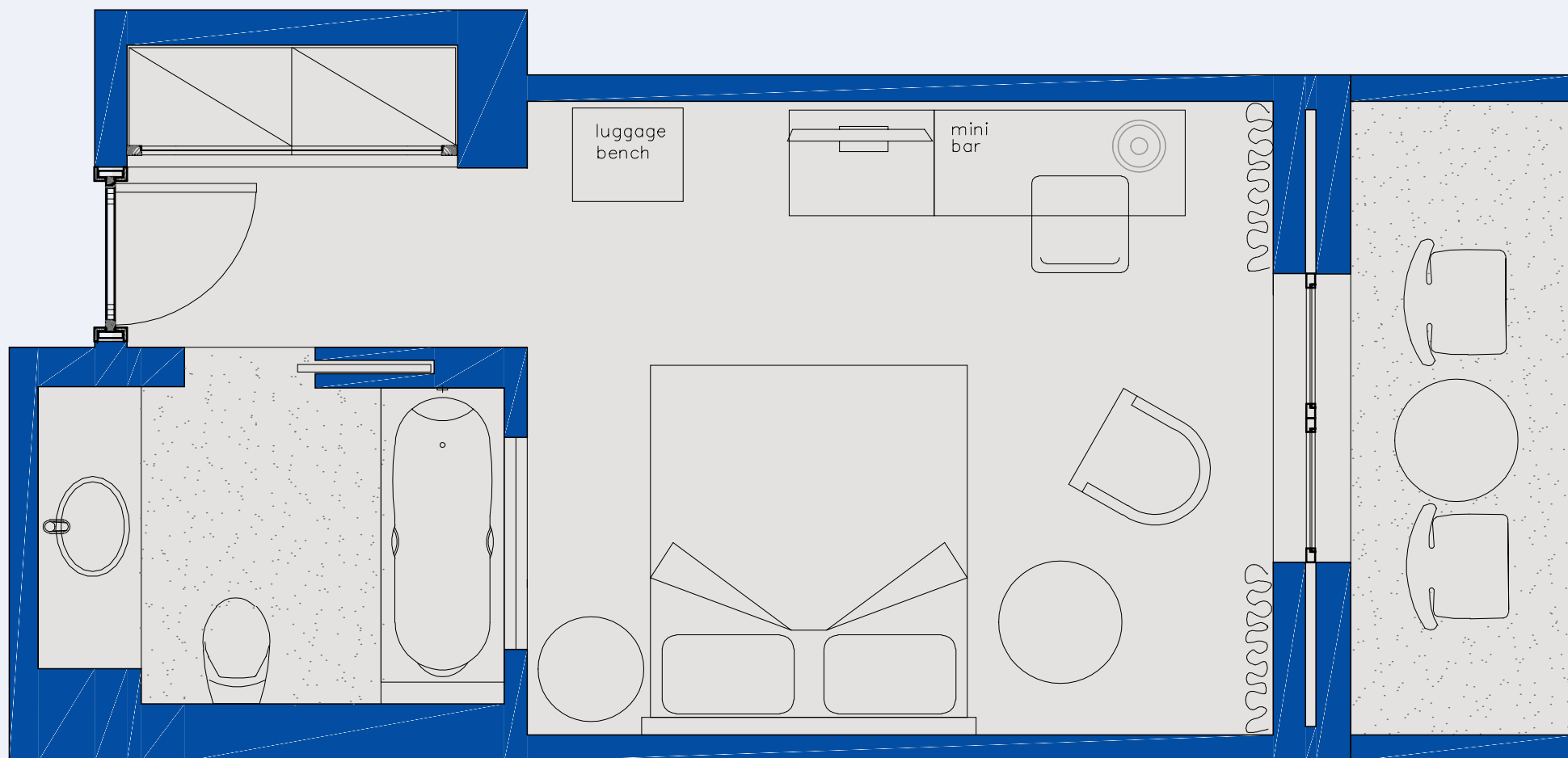
Capacity 2 - 3 pax



Deluxe Room sea view

Room 26 m²

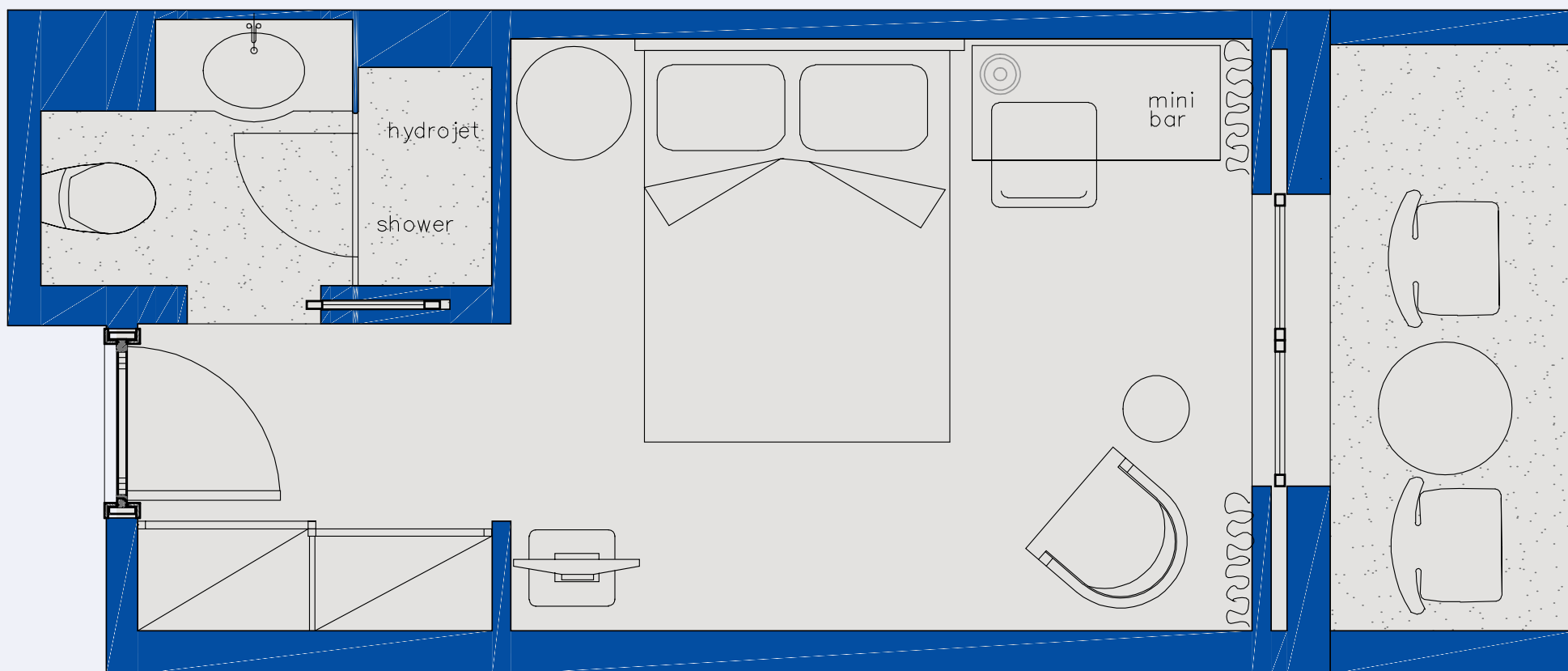
Capacity 2 - 3 pax



Deluxe Room sea view with shower

Room 22 m²

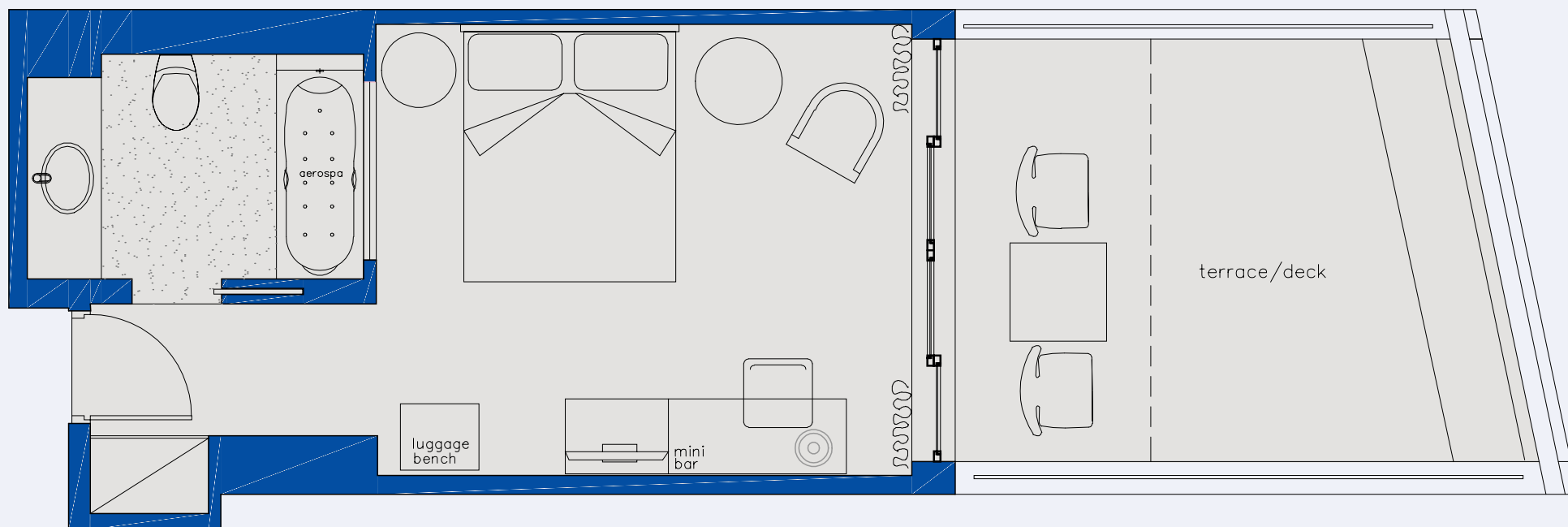
Capacity 2 - 3 pax



Executive Room sea view

Room 26 m²

Capacity 2 - 3 pax



Amphitryon Hotel suites

The 2 suites of from 42 to 50m² and the 4 family rooms from 35 to 50m² all feature a large terrace with a widescreen view to the Bay of Nafplion and the isle of Bourtzi.

All of the comforts of home combine with a high level of personalised service.

[Family room](#)

[Family room](#)

[Luxury Suite](#)

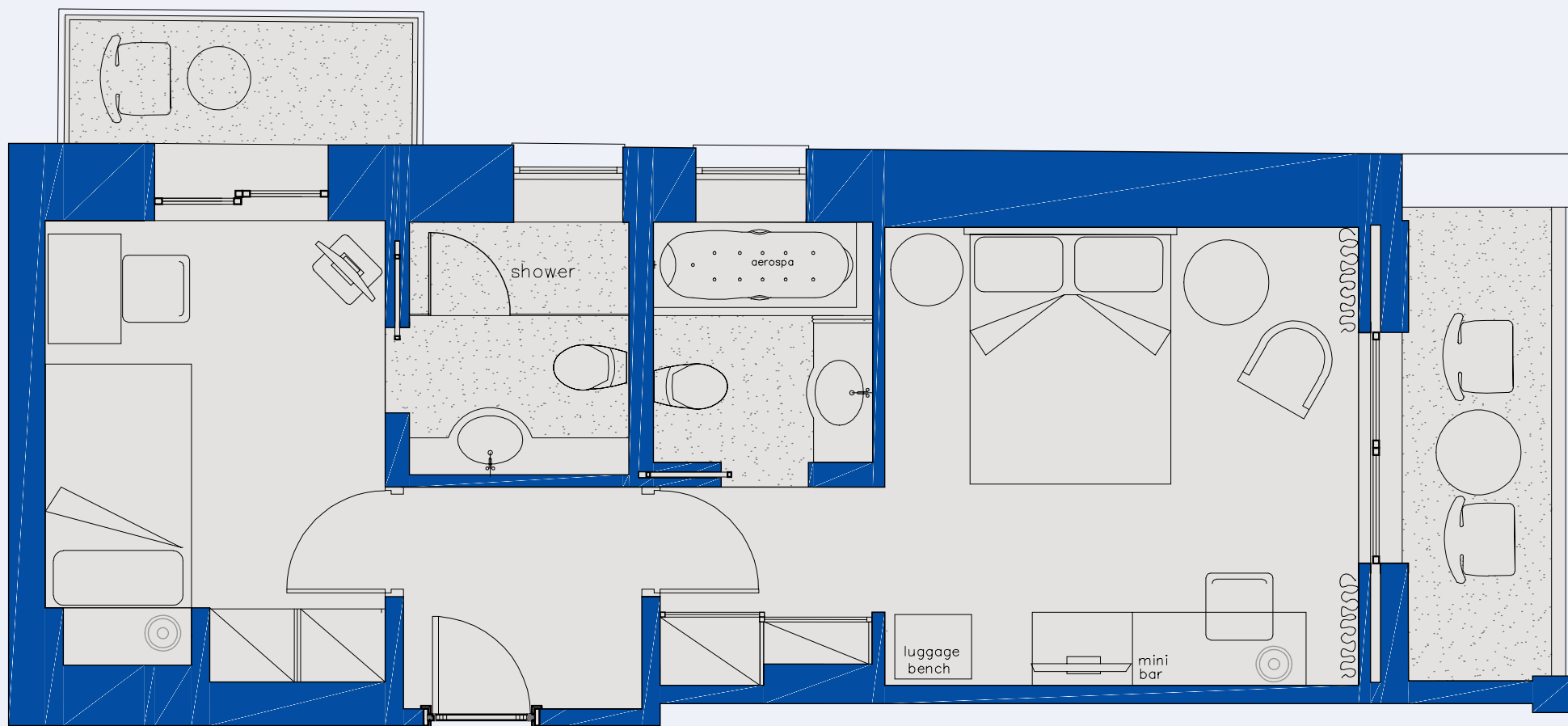
[View plan of suite](#)



Family Room sea view

Room 42 m²

Capacity 3 - 4 pax



Family Room sea view

Room 40 m²

Capacity 2 - 3 pax



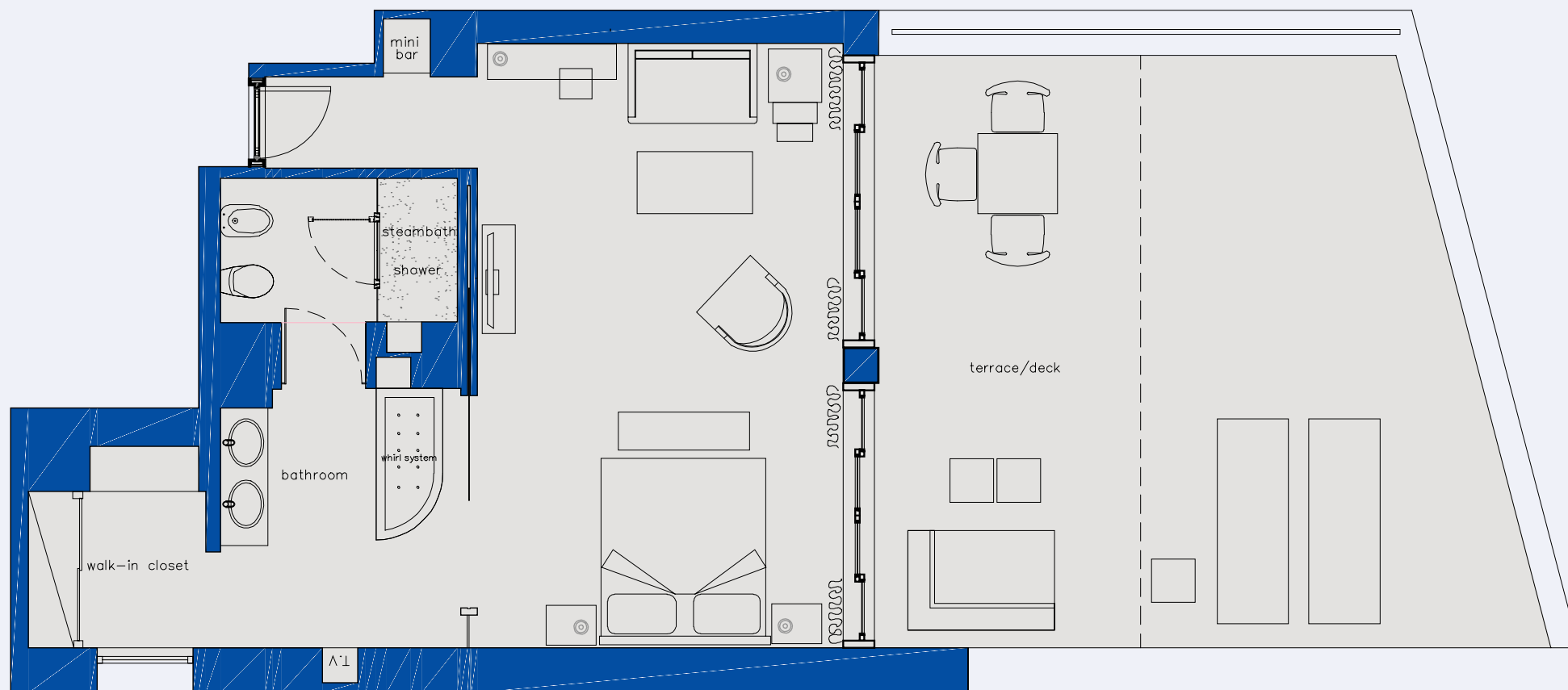


Amphitryon Hotel

Luxury Suite sea view

Room 45 to 52 m²

Capacity 2 - 3 pax



Amphitryon Hotel services

Private check-in and check-out in suites.

24 hour reception, Concierge service.

Excursions, airline information.

Maid service twice daily.

Room service.

Secretarial & business services.

Limousine and helicopter service upon request.

Doctor on call.

Babysitting service upon request.

Lounges and Library lounge with fireplace.

Daylight meeting rooms for up to 60 persons.

Arvanitia Beach within walking distance with sun beds and changing cabins free of charge for hotel guests.



Circle Restaurant and Circle Veranda

The panoramic Circle Restaurant features widescreen views of the bay. Serving fine Mediterranean and Cretan cuisine under the stewardship of the famous Greek chef Y. Baxevanis. The Circle Veranda has stunning views over the bay and the Bourtzi isle.

Indoor capacity 60

Outdoor capacity 55



Onyx Bar

The sophisticated Onyx Bar with its understated contemporary interior provides an ideal destination for drinks and cocktails.

The Onyx Bar is a cool haven away from the heat of the evening and hubbub of the city. On the terrace the gentle pace of the lapping waves relaxes you into the night as you watch the sun set over the bay.



Location

Nafplia Palace is situated 500m from the centre of Nafplion, 140km southeast of Athens, in the region of Peloponnese, 90 minutes by car, 20 minutes by helicopter.

Nafplia Palace is built within a Bronze Age acropolis, which looks out past a Venetian castle – apparently floating in the middle of the sea – towards Argos, the oldest continuously inhabited town in Greece. Mycenae, Tiryns, Nemea and the unbelievable third-century-BC theatre of Epidaurus are all within striking distance.

Amphitryon Hotel boasts an exquisite seafront location, with a widescreen view to the fortified isle of Bourtzi and the bay.



History

Mythology has it that Poseidon saw Amimoni with her hair hanging loose over her shoulders and was dazzled by her beauty. The child of this union was Nauplius, who was born somewhere on the coast of Euboea. When he became a man, he sailed to the Gulf of Argolis and founded Nafplia.

It has been established that the hill of Akronafplia had been inhabited since the end of the 3rd millennium BC. It was the location of the ancient city of Nafplia, which was later subjugated by Argos (7th century) and became its harbour and naval port. Around 300 BC walls were built around the city. Built at the foot of Palamidi, it communicated with it through a secret passage. Geographically, Akronafplia is on three different levels, each of them with a separate castle. The most ancient is the west one, where the Acropolis used to stand fortified by a colossal polygonal wall.



Bourtzi is a small, barren islet-fortress – at the entrance of the harbour, just 450m from the pier. In Venetian times it was joined to Akronafplia by a chain which stopped undesirable ships from entering the harbour. It was fortified by the Venetians in 1471 and was a strong strategic point.

On the other side, 999 steps lead to the Palamidi Fortress. The renowned castle towers above the city of Nafplion giving it a medieval atmosphere. Palamidi was considered to be impregnable, and this is why its conquest by the Greeks in 1822, after months of siege, amazed the whole world.

In 1823, following the war of independence, Nafplion became the first capital of Greece. Amphytrion Hotel was originally the home of the Trikoupi family a great political dynasty in Greece. Spiridon Trikoupi was the first Prime Minister and his son, Charilaos would later serve as Prime Minister seven times and undertook a bold programme of modernisation including the development of the Corinth Canal.

City of Nafplion

We would encourage you to explore Nafplion's Old Town and the local museums. Syntagma Square reminds visitor of an Italian piazza. The impressive lion in the quarter of Pronoia was ordered by King Otto and sculptured by Siegel in remembrance of the Bavarians that died in Greece during the plague epidemic of 1833-34.

First House of Parliament with its numerous monuments and statues of the leaders of the Greek War of Independence.

Archaeological Museum: Occupies the top two floors of the 18th century Venetian arsenal at the western end of Syntagma Square. The collection features pottery from Neolithic to classical times, unusual late Mycenaean figurines from nearby sites Asini and Tiryns. The star attraction is a 15th century BC suit of bronze armour uncovered virtually intact near Mycenae, together with a helmet made from boar tusks.



Peloponnese Folklore Foundation Museum: Won the European Museum of the Year award in 1981 for its displays of traditional textile/producing techniques and folk costumes.

War Museum: Traces Greece's military history from the War of Independence onwards through a collection of photographs, paintings, uniforms and assorted weaponry.

The Komboloi Museum: The first Komboloi (or worry-beads) Museum – said to be the only one worldwide – was founded in Nafplion in 1998. The unique collection consists of approximately 1500 kombolois (from Asia Minor, Greece, Syria, Egypt, Turkey, Persia etc) that date from 1700 to 1950 and are made of various precious and rare materials. On the ground floor there is the workshop where old kombolois are repaired and new, either original or copies of the old ones are produced.



Attractions

Vineyards & Estates: Between the mountain ridges of the Peloponnese are narrow valleys, which are isolated from one another, creating a unique microclimate. Peloponnese and especially the region of Nemea is a blessed land full of nature's gifts: World-famous for its citrus fruits, olive oil, olives and for its wine. Hercules has kept the story alive for centuries. Aghamemnon, the king of Mycenae, was enjoying the Nemean wines with golden cups 2800 years ago!

Shopping: A number of elegant shops and boutiques are available within the old and the new town of Nafplion. Komboloi Shops (worry beads) are found everywhere. It's the perfect gift for taking back home.

Cruising: A range of trips are available from a night cruise around the bay to one-day cruise to Spetses and Hydra.



Nightlife: Nafplion seems to have almost as many nightclubs and bars as it has restaurants. Most of them are on Bouboulinas Str., just stroll along until you find a sound that you like.

Feasts & festivals occur all year round. Including;

Carnival – Nafplion (February/March)

The famous Nafplion carnival will surprise visitors with elaborately decorated chariots parading through the picturesque streets of the old town.

Classical Music Festival – Nafplion (May/June)

Nafplion hosts a classical music festival in late May and early June featuring both Greek and international performers. Venues include the Palamidi Fortress and the Bourtzi isle.

Summer Festival – Epidavros (July/August)

25km from Nafplion, the world-famous Theatre Epidavros hosts performances of ancient Greek drama.



Historical sites

Palamidi Fortress: This vast citadel stands atop the hill of Palamidi, a 216m high outcrop of rock that overlooks the old town from the east. It was built by the Venetians between 1711 and 1714, and is regarded as a masterpiece of military architecture. There are two main approaches to the fortress: Visitors can tackle the seemingly endless 999 steps and a road.

Bourtzi: This small island fortress lies about 600m northwest of the old town and guards the entrance to the port. Although referred to by its Turkish name, it was built by the Venetians at the end of the 15th century. Boat trips are available to the island.



Epidaurus: One of the most renowned of Greece's ancient sites, as reflected by its listing as a World Heritage Site.

The 3rd century theatre is one of the best/preserved classical Greek buildings, renowned for its amazing acoustics. A coin dropped in the centre can be heard from the highest seats up to 14.000 people. Its entrance is flanked by restored Corinthian pilasters.

The museum houses statues, stone inscription recording miraculous cures, surgical instruments, votive offerings and partial reconstructions of the sanctuary's once-elaborated tholos. After the theatre the tholos is considered to have been the site's most impressive building and fragments.

Mycenae: In the barren foothills of Mount Agios Ilias and Mount Zara stands the sombre ruins of ancient vestiges of a Mycenae kingdom which, for 400 year (1600-1200 BC), was the most powerful in Greece, holding sway over the Argolid and influencing the other Mycenaean kingdoms.



Nafplia Palace Villas – Ambassador villa bedroom

Nafplia Palace Hotel & Villas



Nafplia Palace Hotel & Villas

Nafplia Palace Villas – villa with private pool

Nafplia Palace Hotel & Villas

A photograph of a modern villa with a private pool. The villa features large glass doors and windows, offering a view into the interior living and dining areas. The pool is in the foreground, reflecting the villa and the sky. The text "Nafplia Palace Hotel & Villas" is overlaid on the image.

Nafplia Palace Hotel & Villas

Nafplia Palace Villas – villa bathroom



Nafplia Palace Hotel & Villas

Nafplia Palace Hotel & Villas

Nafplia Palace Villas – Jacuzzi with sea view

Nafplia Palace Hotel & Villas

Nafplia Palace Hotel & Villas



Nafplia Palace Villas – Ambassador villa bathroom



Nafplia Palace Hotel & Villas

Nafplia Palace Hotel & Villas

Nafplia Palace Villas – Ambassador villa bathroom

Nafplia Palace Hotel & Villas



Nafplia Palace Hotel & Villas

Nafplia Palace Hotel & Villas – lobby

Nafplia Palace Hotel & Villas



Nafplia Palace Hotel & Villas

Nafplia Palace Hotel & Villas – bar

Nafplia Palace Hotel & Villas



Nafplia Palace Hotel & Villas

Nafplia Palace Hotel & Villas – main pool

Nafplia Palace Hotel & Villas



Nafplia Palace Hotel & Villas

Nafplia Palace Hotel & Villas – Arvanitia Beach

Nafplia Palace Hotel & Villas

Nafplia Palace Hotel & Villas



Nafplia Palace Hotel & Villas

Nafplia Palace Hotel & Villas

Nafplia Palace Hotel & Villas



Amphitryon Hotel – reception



Amphitryon Hotel – lounge



Amphitryon Hotel

Amphitryon Hotel – Onyx Bar



Amphitryon Hotel – Circle Restaurant



Amphitryon Hotel

Amphitryon Hotel

Amphitryon Hotel – veranda bar

Amphitryon Hotel

Amphitryon Hotel



Amphitryon Hotel – bedroom



Amphitryon Hotel – bathroom



Contact details

Nafplia Palace Hotel & Villas

Akronafplia, 21100, Nafplion, Peloponnese, Greece

Telephone: +30 27520 70800

Fax: +30 27520 28783

Email: reservations@nafplionhotels.gr

Website: www.nafpliapalace.gr

Amphitryon Hotel

Spiliadou St., 211 00, Nafplion, Peloponnese, Greece

Telephone: +30 27520 70700

Fax: +30 27520 28783

Email: info@amphitryon.gr

Reservations: reservations@nafplionhotels.gr

Website: www.amphitryon.gr

Helios Hotels and Resorts – Sales and Marketing

19 Amerikis Str., 10672 Athens, Greece

Telephone: +30 210 3679 000

Fax: +30 210 3679 070

Email: salesathens@helioshotels.gr

Website: www.helioshotels.gr

Worldwide sales office

New York office

Telephone: +1 212 515 5696

Fax: +1 212 515 5848

E-mail: info@helioshotelsandresorts.com

Moscow office:

Telephone: +7 495 935 83 66

Fax: +7 495 937 54 35

Email: ivanova@helioshotels.ru

